



**AIRHORSE SCREW AIR COMPRESSOR
SPECIALLY FOR LASER MACHINE
艾玛激光切割专用螺杆机**

Airhorse[®]
艾玛压缩机

广州艾玛压缩机有限公司
GUANGZHOU AIRHORSE COMPRESSOR CO.,LTD

艾玛四合一激光机四大优点

FOUR ADVANTAGES

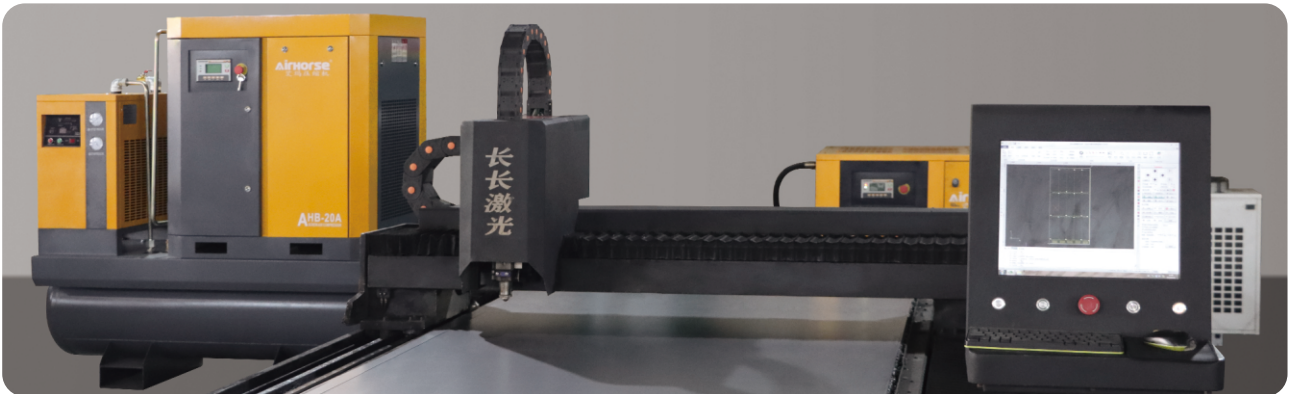


1 一体化设计

INTEGRATED DESIGN

一体式集成·安装方便 / INTEGRATION · EASIER INSTALL

- 省去自配储气罐、冷干机、过滤器的麻烦 Air compressor, air dryer, air tank and line filters integration.
- 省去接管安装的麻烦，接电即用 Avoid the trouble to connect the pipes, can use it after power on.



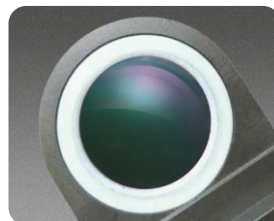
2 供气无油无水

AIR SUPPLY WITHOUT OIL AND WATER

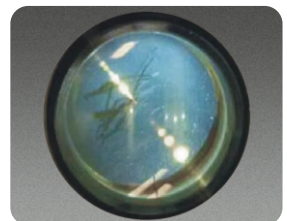
采用高效板式冷冻式干燥机和4级高效精密过滤器，确保获得纯净的压缩空气，压力露点低至2-8°C，后处理采用不锈钢管路，避免产生二次污染。

The high-efficiency plate-type refrigerated dryer and 4 level high-efficiency precision filter to ensure the access to pure compressed air, and the pressure dew point is as low as 2-8°C.

The post-treatment adopts stainless steel pipelines to avoid secondary pollution.



未污染镜片
Untainted Lenses



被污染镜片
Contaminated Lenses

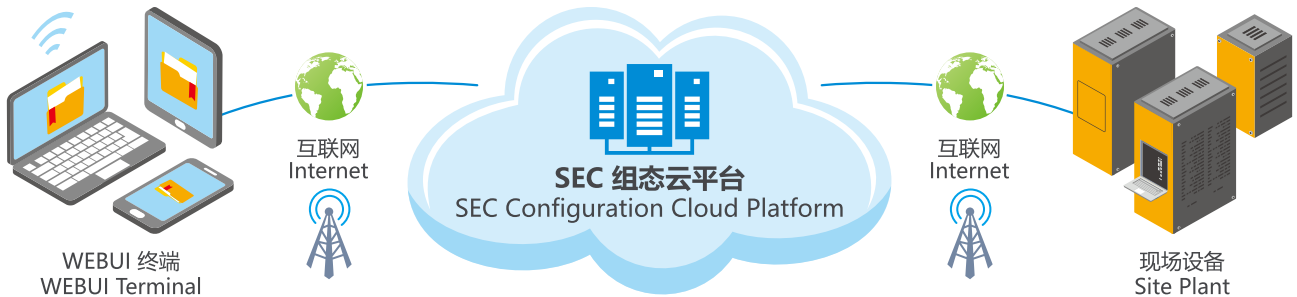
3

智能监控

INTELLIGENT MONITORING

智能管家远程监控，24小时在线监测，无需专人管理打开手机即可快速获得机器运行资讯。机器遇到故障或者需要保养时，系统会自动发送预警信息。

Smart housekeeper remote monitoring, 24-hour online monitoring, no need for special management to open the phone to quickly obtain machine operation information. When the machine encounters a malfunction or needs maintenance, the system will automatically send an early warning message.



4

优秀配件展示

HIGH QUALITY SPARE PARTS

优秀主机

HIGH-END AIR END

双螺杆主机采用最新型线设计，高精度加工工艺，减少压缩气体的内泄露，降低功耗，为客户节约使用成本。Double screws air end adopts the latest line design and high-precision processing technology to reduce internal leakage of compressed air, It will reduce power consumption, and save use costs for customers.



进口电子配件

IMPORTED ELECTRONIC ACCESSORIES

进口的电子元件，高防护安全等级，确保设备运行稳定，且电器部分放大30~50%。

Imported electronic components, high protection and safety level, to ensure the stable operation of the equipment, and the electrical part is enlarged by 30~50%.



高效精密过滤器

HIGH EFFICIENCY PRECISION FILTER

采用高精密耐高压过滤器，多重过滤，确保供气无油无水，保证生产。

Using high-precision and high-pressure-resistant filters, multiple filtrations to ensure that the air supply is oil-free and water-free, ensuring production.



大容量储气罐

LARGE CAPACITY AIR TANK

超大容量，更节能省电，加厚材质，缓冲，降温、除水、稳定气压。Large capacity, more energy-saving and electricity-saving, thicker material, buffering, cooling, water removal, and stable air pressure.



艾玛四合一永磁变频激光机参数表

PARAMETERS AIRHORSE 4 IN 1 TYPE PM VSD LASER MACHINE SCREW AIR COMPRESSOR

型号 Model	电机功率 Motor Power (KW)	排气量 Air Flow (m ³ /min)	排气压力 Working Pressure (Mpa)	出口管径 Outlet Diameter (DN)	外形尺寸 / Size L×W×H (mm)	重量 Weight (kg)
BPM-20A	15	1.25	1.6	1/2"	1785×840×1800	540
BPM-30A	22	1.84	1.6	3/4"	1785×840×1800	600

艾玛永磁变频激光机参数表

PARAMETERS AIRHORSE PM VSD LASER MACHINE SCREW AIR COMPRESSOR

型号 Model	电机功率 Motor Power (KW)	排气量 Air Flow (m ³ /min)	排气压力 Working Pressure (Mpa)	出口管径 Outlet Diameter (DN)	外形尺寸 / Size L×W×H (mm)	重量 Weight (kg)
BPM-20A	15	1.25	1.6	3/4"	940×800×1075	265
BPM-30A	22	1.84	1.6	3/4"	940×800×1075	325
BPM-50A	37	3.47	1.6	1 1/2"	1560×1000×1365	550
EPM-60A	45	4.52	1.6	1 1/2"	1560×1000×1365	580
EPM-75A	55	5.25	1.6	2"	1800×1160×1490	870
EPM-100A	75	7.35	1.6	2"	1800×1160×1490	900
EPM-120A	90	9.24	1.6	2"	1800×1160×1490	950
EPM-150A	110	11.25	1.6	2"	2100×1400×1780	1650
EPM-175A	132	14.53	1.6	2 1/2"	2500×1450×1800	2100
EPM-220A	160	18.75	1.6	2 1/2"	2500×1450×1800	2650



艾玛四合一激光切割专用螺杆机参数表

PARAMETERS AIRHORSE INTEGRATED 4 IN 1 TYPE SCREW AIR COMPRESSOR SPECIALLY FOR LASER MACHINE

型号 Model	电机功率 Motor Power (KW)	排气量 Air Flow (m ³ /min)	排气压力 Working Pressure (Mpa)	出口管径 Outlet Diameter (DN)	外形尺寸 / Size L×W×H (mm)	重量 Weight (kg)
AHB-10A	7.5	0.48	1.6	1/2"	1785×840×1690	425
AHB-15A	11	0.65	1.6	1/2"	1785×840×1800	475
AHB-20A	15	1.2	1.6	1/2"	1785×840×1800	540
AHB-30A	22	1.75	1.6	3/4"	1785×840×1800	600

艾玛激光切割专用螺杆机参数表

PARAMETERS AIRHORSE SCREW AIR COMPRESSOR SPECIALLY FOR LASER MACHINE

型号 Model	电机功率 Motor Power (KW)	排气量 Air Flow (m ³ /min)	排气压力 Working Pressure (Mpa)	出口管径 Outlet Diameter (DN)	外形尺寸 / Size L×W×H (mm)	重量 Weight (kg)
AHB-10A	7.5	0.48	1.6	1/2"	860×730×960	210
AHB-15A	11	0.65	1.6	3/4"	940×800×1075	260
AHB-20A	15	1.2	1.6	3/4"	940×800×1075	305
AHB-30A	22	1.75	1.6	1"	1200×950×1150	410
AHB-50A	37	3	1.6	1 1/2"	1500×990×1420	610
AHB-60A	45	4.3	1.6	1 1/2"	1500×990×1420	680
AHB-75A	55	5	1.6	1 1/2"	1500×990×1420	750
AHD-100A	75	6.4	1.6	2"	1800×1160×1490	870
AHD-120A	90	8.5	1.6	2"	1800×1160×1490	900
AHD-150A	110	10.7	1.6	2"	2100×1400×1780	1550
AHD-175A	132	14.05	1.6	2 1/2"	2500×1450×1800	2050
AHD-220A	160	18.2	1.6	2 1/2"	2500×1450×1800	2550

艾玛永磁变频螺杆空压机(20公斤)参数表

PARAMETERS AIRHORSE PM VSD SCREW AIR COMPRESSOR (20KG)

型号 Model	电机功率 Motor Power (KW)	排气量 Air Flow (m ³ /min)	排气压力 Working Pressure (Mpa)	出口管径 Outlet Diameter (DN)	外形尺寸 / Size L×W×H (mm)	重量 Weight (kg)
EPM-20A	15	1.03	2.0	3/4"	1160×700×1100	230
EPM-30A	22	2.08	2.0	1"	1200×900×1150	415
EPM-50A	37	3.35	2.0	1 1/2"	1560×1000×1365	630

应用领域

APPLICATION FIELD

常应用于激光设备、石油化工、金属制品、汽修行业、喷涂喷漆、精密机械、模具行业。

Usually used in laser equipment, petrochemical industry, metal products, auto repair industry, spray painting, precision machinery, mold industry.



售后服务
AFTER-SALES
SERVICE

艾玛压缩机在国内具有较完善的经销商服务体系及5个公司直属售后服务办事处，海外40多个国家分布约130家经销商。可有效对接客户及国内外各种订单，并提供及时有效的售后服务。

AirHorse Compressor has a complete dealer service system in China and 5 after-sales service offices directly under the headquarters, and we have about 130 dealers in more than 40 countries overseas. It can effectively provide service for our customers and process various orders in China and abroad market, we will provide timely and effective after-sales service for you.

AirHorse® 艾玛

广州艾玛压缩机有限公司

办公室：广州市黄埔区新阳西路38号生生广场4栋1503-1505室

工厂：广州市增城区中新镇迳贝路8号

电话：86-20-38090459 \ 32376170 传真：86-20-38090400 \ 32376096

GUANGZHOU AIRHORSE COMPRESSOR CO.,LTD

OFFICE ADDRESS : Room 1503-1505, Building 4, Shengsheng Plaza, No. 38 Xinyang West Road, Huangpu District, Guangzhou

FACTORY ADDRESS : No.8, Jingbei Road, Zhongxin Town, Zengcheng District, Guangzhou China

TEL : 86-20-38090459 \ 32376170 FAX : 86-20-38090400 \ 32376096

▶ 微信



▶ WHATSAPP



☎ 销售热线 / WHATSAPP Sales Hotline +86 137 2522 4016 ☎ 售后热线 After-Sales Hotline +86 181 4486 2868

🌐 www.ahaircompressor.com

✉ export@ahaircompressor.com

*温馨提示：本参数表仅供参考，本公司可能对相关参数进行调整，如有变动，恕不另行通知，若有不明处，欢迎来电询问。

*FRIENDLY REMINDER: This parameter list is for reference only. We may adjust the related parameter. if there is any change, we will not inform you otherwise. If you do not know, please call us.

*温馨提示：本公司产品标准适用于海拔1000米以下地区。若使用环境海拔超过1000米，欢迎来电咨询，进行定制化配置，以确保设备性能与运行安全。

*FRIENDLY REMINDER: The standard specifications of our products are applicable to regions with an altitude below 1,000 meters. For usage environments exceeding 1,000 meters above sea level, please feel free to contact us for customized configurations to ensure optimal equipment performance and operational safety.