

艾玛柴固螺杆空压机

AIRHORSE DIESEL DRIVE STATIONARY SCREW AIR COMPRESSOR

产品型号 Model	产品种类 Type	排气量/压力 Capacity/ Pressure	动力 Engine	外形尺寸 Dimension (mm)	重量 Weight (kg)	40尺/HQ高柜 建议装柜台数 Recommend Quantity to Load into 40HQ Container
AHLC18/18CG	柴固 No Wheels	18/18	康明斯157KW/C220(国三) Cummins 157KW 220HP	2600×1700×2200	2800	4
AHLC20/20CG	柴固 二级压缩 No Wheels Two Stage Compression	20/20	康明斯194KW/C260(国二) Cummins 194KW 260HP	2950×1800×2200	3000	3
AHLC24/22CG	柴固 二级压缩 No Wheels Two Stage Compression	24/22	康明斯239KW/C330(国二) Cummins 239KW 330HP	3460×2050×2200	3100	3
AHLC24/22CG	柴固 二级压缩 No Wheels Two Stage Compression	24/22	玉柴228KW/C310(国二) Yuchai 228KW 310HP	3460×2050×2200	3100	3
AHLC26/22CG	柴固 二级压缩 No Wheels Two Stage Compression	26/22	康明斯242KW/C260(国三) Cummins 242KW 260HP	3460×2050×2200	3150	3
AHLC30/10CG	柴固 二级压缩 No Wheels Two Stage Compression	30/10	玉柴191KW/C260(国二) Yuchai 191KW 260HP	2950×1800×2200	3000	3
AHLC29/25CG	柴固 二级压缩 No Wheels Two Stage Compression	29/25	康明斯264KW/C360(国二/国三) Cummins 264KW 360HP	3460×2050×2200	3200	3
AHLC31/25CG	柴固 二级压缩 No Wheels Two Stage Compression	29/25	康明斯294KW/C400(国二/国三) Cummins 294KW 400HP	3460×2050×2200	3300	3
AHLC29/23CG	柴固 二级压缩 No Wheels Two Stage Compression	29/23	锡柴258KW/C350(国二/国三) Sitchai 258KW 350HP	3460×2050×2200	3200	3
AHLC31/25CG	柴固 二级压缩 No Wheels Two Stage Compression	31/25	锡柴国二309KW/国三C294KW Sitchai 309KW 294HP	3950×2050×2200	3300	3
AHLC29/23CG	柴固 二级压缩 No Wheels Two Stage Compression	29/23	玉柴295KW/C400(国二)/国三 Yuchai 295KW 400HP	3460×2050×2200	3300	3
AHLC31/25CG	柴固 二级压缩 No Wheels Two Stage Compression	31/25	玉柴295KW/C400(国二)/国三 Yuchai 295KW 400HP	3950×2050×2200	3300	3

* 规格参数及外形尺寸因产品改良会有所变动，恕不另行通知！* Specifications and dimensions are subject to change without prior notice due to product improvement.

Airhorse 艾玛

广州艾玛压缩机有限公司

办公室：广州市黄埔区新阳西路38号生生广场4栋1503-1505室

工厂：广州市增城区中新镇迳贝路8号

电话：86-20-38090459\32376170 传真：86-20-38090400\32376096

GUANGZHOU AIRHORSE COMPRESSOR CO.,LTD

OFFICE ADDRESS : Room 1503-1505, Building 4, Shengsheng Plaza, No. 38 Xinyang West Road, Huangpu District, Guangzhou

FACTORY ADDRESS : No.8, Jingbei Road, Zhongxin Town, Zengcheng District, Guangzhou China

TEL : 86-20-38090459 \ 32376170 FAX : 86-20-38090400 \ 32376096

销售热线 / WHATSAPP Sales Hotline **+86 137 2522 4016** 售后热线 After-Sales Hotline **+86 181 4486 2868**

www.ahaircompressor.com

export@ahaircompressor.com



**AIRHORSE DIESEL MOBILE
SCREW AIR COMPRESSOR**
艾玛柴油移动螺杆空压机

Airhorse®
艾玛压缩机



广州艾玛压缩机有限公司
GUANGZHOU AIRHORSE COMPRESSOR CO.,LTD

*温馨提示：本参数表仅供参考，本公司可能对相关参数进行调整，如有变动，恕不另行通知，若有不明处，欢迎来电询问。

*FRIENDLY REMINDER: This parameter list is for reference only. We may adjust the related parameter. if there is any change, we will not inform you otherwise. If you do not know, please call us.

*温馨提示：本公司产品标准适用于海拔1000米以下地区。若使用环境海拔超过1000米，欢迎来电咨询，进行定制化配置，以确保设备性能与运行安全。

*FRIENDLY REMINDER: The standard specifications of our products are applicable to regions with an altitude below 1,000 meters. For usage environments exceeding 1,000 meters above sea level, please feel free to contact us for customized configurations to ensure optimal equipment performance and operational safety.



高效机头

采用知名品牌主机，强大的心脏决定了整机优异的性能，确保了更大的排气量，更高的效率，更稳的可靠性和更长的运行寿命。其最优的螺杆线速度及压缩效率，使整机振动最大限度降低，高精密加工的转子，有效延长了运动部件的寿命。

AIR END

Adopt a well-known air end, the powerful heart decides the high performance of the whole machine, to make sure bigger air capacity, higher efficiency, high precision process rotor, extend the life of the moving parts efficiently.



冷却系统

超大换热面积设计，有效防止机器高温，减少因高温而引起积碳现象。内壁防腐处理，能适应更恶劣的工况，延长使用寿命。

COOLING SYSTEM

Design of large heat exchange area, can effectively avoid high temperature and adapt to bad working condition to ensure longer life.



控制面板

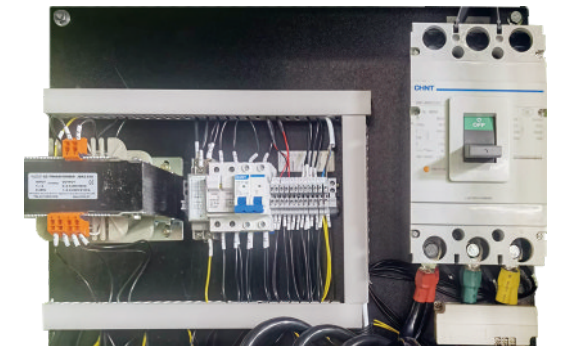
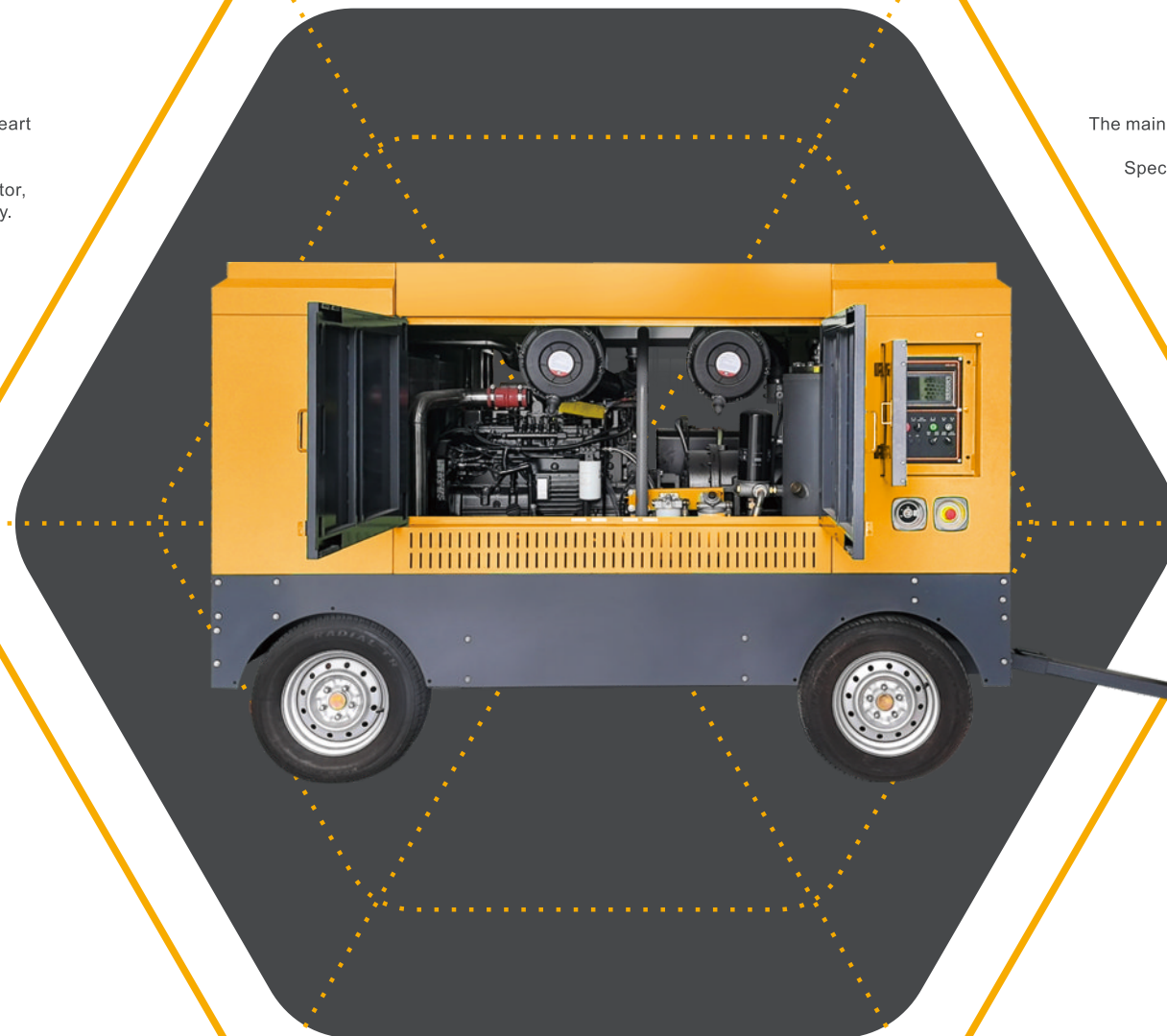
中，英，俄，西班牙语等可用

该艾玛控制系统提供了单点控制和访问您的压缩空气系统，为您提供最具成本效益的维护计划，确保无故障运行，集成多功能显示和控制等特点。

CONTROL PANEL

CHINESE, ENGLISH, RUSSIAN, SPANISH AVAILABLE

AirHorse control panel provide the most cost effective maintenance program, to ensure trouble-free operation, almost like a built-in service technician.



CIRCUIT BOARD

The main electronic components use world-renowned brands, which greatly improves the service life. Specialized wiring interfaces, powerful fault diagnosis and protection functions, making the air compressor operation more reliable and power-saving.

电路板

主要电子元器件均采用世界知名品牌，极大地提高了使用寿命；专业化的布线接口，强大的故障诊断及保护功能，使空压机运行更加可靠、省电。



高性能发动机

采用知名品牌高性能发动机，防护等级IP54，绝缘等级F级，效率高出同类产品的3%-5%，即使在较恶劣的工作环境下也能正常工作。

HIGH PERFORMANCE ENGINE

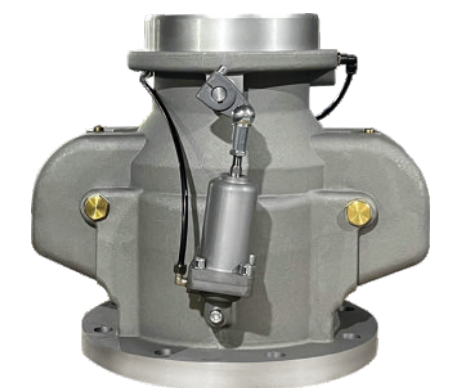
Using well-know brand high performance engine, protection class Ip54, F Class insulation, SKF load bearing, higher efficiency than similar products by 3%-5%.

进气阀

世界知名品牌，可根据系统用气量要求自动调节气量，保证设备运行平稳及降低运行费用，节约能源；全自动加载/卸载，具有自动停机保护功能；易损件少-维护工作少；尺寸大，压降小，吸气量大。

INTAKE VALVE

Automatically adjust based on gas consumption, low maintenance, good stability, large inlet air.



艾玛柴油移动螺杆空压机

**AIRHORSE
DIESEL MOBILE
SCREW AIR
COMPRESSOR**

CHARACTERISTIC



柴油移动式螺杆空压机是艾玛压缩机公司热销系列之一，拥有高效、灵活等特点，深受用户喜爱。该系列采用了六缸柴油机，配置反转机头，提高了可靠性、经济实用，综合性能更出色，广泛应用于水电、铁路、修船、矿山、公路、喷浆、油气田、水井钻、市政工程、光缆铺设等行业领域。

The diesel mobile screw air compressor is one of the hot-selling series of Airhorse compressor, with its high efficiency and flexibility, it is loved by all users. This series uses a six-cylinder diesel engine with a reversal head, which improves reliability, economical and practical, and has better comprehensive performance. It is widely used in hydropower, railway, ship repair, mines, highways, jets, oil and gas fields, well drilling, municipal Engineering, optical cable laying and other industries.

环保低噪

LOW NOISE

艾玛柴油机采用优质的主机和轴流风扇，从根本上降低了噪音，主机底部配置了减震器，进一步减少了噪音的共振，进出气流均有导流板导流，机器运行噪音低，再加上高质量全罩式的吸音海绵设计，四大措施最大限度实现环保减噪。

The Airhorse diesel mobile screw air compressor uses high quality host and axis fans, which fundamentally reduces noise. The bottom of the host is equipped with shock absorbers to further reduce the resonance of noise. The inlet and outflows have diversion to divert. Coupled with the design of high-quality full-cover sound-absorbing sponge design, the four major measures to maximize environmental protection and noise reduction.

集成设计

INTEGRATED DESIGN

依据施工现场需要设计的侧面广开门，维护保养时能够拥有最佳的视角和足够的操作空间，实现快速维护，减少停工成本；同时在设计时将需要维修保养的部分集中于机体一侧，确保定期保养的快速完成。

Side-open door designed according to the construction site, provides best perspective and sufficient operating space to achieve rapid maintenance and reduce the cost of shutdown while maintaining the unit. At the same time, the part that needs to be maintained are concentrated on the side of the body to ensure the rapid completion of regular maintenance.

高可靠性

HIGH RELIABILITY

艾玛各主要部件均采购国内外知名企业产品，质量稳定可靠、压力恒定、流量稳定；能够实现排量连续自动调节，高效节能、稳定可靠，经济环保无污染，噪音低。

All major components purchased from well-known domestic and foreign products, with stable and reliable quality, constant pressure, stable flow; It can achieve continuous automatic adjustment of displacement, efficient energy saving, low noise, stable and reliable, economic and environmental friendly.

全面监控

COMPREHENSIVE MONITORING

设备配置智能管理系统，实时监控运行状态，拥有中英文对照控制面板，设备运行状态清晰明了，并设置非正常自动停机功能，确保人机安全。

The equipment is equipped with an intelligent management system, monitoring the operation in real time, with a Chinese-English control panel, the operating status of unit can be overwatched clearly, and the non-normal automatic shutdown function is set to ensure the safety of human-compressor.

大排量 高风压

LARGE DISPLACEMENT HIGH AIR PRESSURE

大排量、高风压的特性，精确完美的发挥冲击器的最佳临界点，在使用过程中避免因流量不稳定或压力不足而影响施工。

The characteristics of large displacement and high air pressure, can accurately and perfect the optimal performance of the compressor. which can also avoid affecting construction due to unstable air flow or insufficient pressure during the use process.

操作维护简便

SIMPLE OPERATION AND MAINTENANCE

机器操作简单易用，按住启动按钮即可启动，各类安全指示灯和仪表指示器帮助我们了解机器运行状态。机组的排气口即接即用，并配置了不同大小的接口，适用于不同用气设备的尺寸要求。

The compressor operation is simple and easy. Press and hold the start button to start. Various safety indicators and instrument indicators help us understand the operating state of the unit. The exhaust port of the unit is connected or equipped with different sizes of ports, which is suitable for the size requirements of different air equipment.

适用于极端环境

SUITABLE FOR EXTREME ENVIRONMENTS

柴油机配置了重型燃油过滤器，大容量电瓶，在寒冷地带可以选装燃油液体加热器，通过柴油机的冷却小循环加热缸体，寒冷极端天气依然可以良好运行

The diesel mobile screw air compressor is equipped with a heavy fuel filter, a large-capacity battery, and the fuel liquid heater can be selected in the cold area.

艾玛柴油移动螺杆空压机

AIRHORSE DIESEL MOBILE SCREW AIR COMPRESSOR

产品型号 Model	产品种类 Type	排气量/压力 Capacity/ Pressure	动力 Engine	外形尺寸 Dimension (mm)	重量 Weight (kg)	40尺/HQ高柜 建议装柜台数 Recommend Quantity to Load into 40HQ Container
AHLC5/8CY	双罐 2 Tank	5/8	锡柴41KW/55(国二) Sitchai 41KW 55HP	1800×1250×1250	780	14
AHLC7/8CY	双罐 2 Tank	7/8	玉柴55KW/75(国二) Yuchai 55KW 75HP	1800×1250×1500	900	14
AHLC6/8CY	二轮 Two Wheels	6/8	锡柴41KW/55(国二) Sitchai 41KW 55HP	1800×1250×1500	1050	16
AHLC8/8CY	二轮 Two Wheels	8/8	玉柴55KW/75(国二) Yuchai 55KW 75HP	2050×1750×1850	1200	8
AHLC10/8CY	二轮 Two Wheels	10/8	玉柴78KW/105(国二) Yuchai 78KW 105HP	2050×1750×1850	1350	8
AHLC13/8CY	二轮 Two Wheels	13/8	玉柴88KW/120(国三) Yuchai 88KW 120HP	2350×2020×2350	1800	4
AHLC12/10CY	二轮 Two Wheels	12/10	玉柴88KW/120(国三) Yuchai 88KW 120HP	2350×2020×2350	1800	4
AHLC10/12CY	二轮 Two Wheels	10/12	康明斯93KW/125(国三) Cummins 93KW 125HP	2350×2020×2350	2000	4
AHLC11/18CY	二轮 二级压缩 Two Wheels Two Stage Pression	11/18	玉柴110KW/150(国二) Yuchai 110KW 150HP	2350×2020×2350	2480	4
AHLC13/18CY	二轮 二级压缩 Two Wheels Two Stage Pression	13/18	玉柴140KW/190(国二) Yuchai 140KW 190HP	2600×1700×2400	2600	3
AHLC12/10CY	四轮 Four Wheels	12/10	玉柴118KW/160(国三) Yuchai 118KW 160HP	2600×1700×2400	2480	3
AHLC550/13CY	四轮 Four Wheels	15/13.15/15	玉柴140KW/190(国二) Yuchai 140KW 190HP	2600×1700×2400	2600	3
AHLC580/17CY	四轮 Four Wheels	17/17	玉柴股份191KW/260国三 -康明斯194KW/C260国二 Yuchai 91KW 260HP / Cummins 194KW 260HP	2950×1800×2550	3200	3
AHLC20/8CY	四轮 二级压缩 Four Wheels Two Stage Pression	20/8	康明斯153KW(国二) Cummins 153KW	2600×1700×2400	3000	3
AHLC24/8	四轮 二级压缩 Four Wheels Two Stage Pression	24/8	玉柴162KW(国三) Yuchai 162KW	2950×1800×2550	3100	3
AHLC14/18,17/12CY	四轮 二级压缩 双工况 Four Wheels / Two Pressure Two Stage Compression	14/18,17/12	玉柴股份140KW/190四缸(国三) Yuchai 140KW 190HP	2600×1700×2400	2600	3
AHLC16/16,18/10CY	四轮 双工况 Four Wheels / Two Pressure	16/16,18/10	康明斯154KW/C210(国三) Cummins 154KW 210HP	2600×1700×2400	3000	3
AHLC15/18CY	四轮 双工况 Four Wheels / Two Pressure	15/18	康明斯154KW/C210(国三) Cummins 154KW 210HP	2600×1700×2400	3000	3
AHLC15/18,17/13CY	四轮 二级压缩 双工况 Four Wheels / Two Pressure Two Stage Compression	15/18,17/13	康明斯154KW/C210(国三) Cummins 154KW 210HP	2600×1700×2400	3000	3
AHLC17/18,18/15CY	四轮 二级压缩 双工况 Four Wheels / Two Pressure Two Stage Compression	17/18,18/15	康明斯157KW/C220(国三) Cummins 157KW 220HP	2840×1700×2400	3100	3
AHLC15/21CY	四轮 二级压缩 Four Wheels / Two Stage Compression	15/21	康明斯157KW/C220(国三) Cummins 157KW 220HP	2840×1700×2400	3100	3
AHLC19/21,21/18CY	四轮 二级压缩 双工况 Four Wheels / Two Pressure Two Stage Compression	19/21,21/18	玉柴191KW/C260(国三) Yuchai 191KW 260HP	2950×1800×2550	3200	3
AHLC21/21,23/18	四轮 二级压缩 双工况 Four Wheels / Two Pressure Two Stage Compression	21/21,23/18	玉柴191KW/C260(国三) Yuchai 191KW 260HP	2950×1800×2550	3200	3
AHLC31/25	履带柴移 二级压缩 Track Driving Wheel	31/25	玉柴股份295KW/400(国二)/国三 Yuchai 295KW 400HP	3950×2050×2600	3500	3

* 规格参数及外形尺寸因产品改良会有所变动，恕不另行通知！* Specifications and dimensions are subject to change without prior notice due to product improvement.

艾玛电移螺杆空压机(四轮)

AIRHORSE ELECTRIC MOBILE SCREW AIR COMPRESSOR (FOUR WHEELS)

产品型号 Model	产品种类 Type	排气量/压力 Capacity (m ³ /min) / Pressure bar)	动力 Engine	外形尺寸 Dimension (mm)	重量 Weight (kg)	40尺/HQ高柜 建议装柜台数 Recommend Quantity to Load into 40HQ Container
AHLC3.6/8DY	螺杆式单级压缩油冷式 Screw single-stage compressor-oil-cooled type	3.6/8	22kW	1650×950×1200	430	28
AHLC5/10DY	螺杆式单级压缩油冷式 Screw single-stage compressor-oil-cooled type	5/10	30kW	1650×950×1200	500	28
AHLC6.5/10DY	螺杆式单级压缩油冷式 Screw single-stage compressor-oil-cooled type	6.5/10	37kW	1650×950×1200	600	28
AHLC13.6/8DY	螺杆式单级压缩油冷式 Screw single-stage compressor-oil-cooled type	13.6/8	75kW	2400×1500×1950	1600	4
AHLC12/10DY	螺杆式单级压缩油冷式 Screw single-stage compressor-oil-cooled type	12/10	75kW	2400×1500×1950	1600	4
AHLC16/8DY	螺杆式单级压缩油冷式 Screw single-stage compressor-oil-cooled type	16/8	90kW	2400×1500×1950	1700	4
AHLC13/14.5DY	螺杆式单级压缩油冷式 Screw single-stage compressor-oil-cooled type	13/14.5	90kW	2400×1500×1950	1700	4
AHLC18.5/13DY	螺杆式两级压缩油冷式 Screw two-stage compressor-oil-cooled type	18.5/13	90kW	2400×1500×1950	1700	4
AHLC16/13DY	螺杆式单级压缩油冷式 Screw single-stage compressor-oil-cooled type	16/13	110kW	2640×1500×1950	1800	4
AHLC17/18DY	螺杆式两级压缩油冷式 Screw two-stage compressor-oil-cooled type	17/18	110kW	2640×1500×1950	1800	4
AHLC15/18DY	螺杆式单级压缩油冷式 Screw single-stage compressor-oil-cooled type	15/18	132kW	2940×1700×2100	2000	4
AHLC21/18DY	螺杆式两级压缩油冷式 Screw two-stage compressor-oil-cooled type	21/18	132kW	2940×1700×2100	2500	4
AHLC23/18DY	螺杆式两级压缩油冷式 Screw two-stage compressor-oil-cooled type	23/18	132kW	2940×1700×2100	2500	4
AHLC26.5/18DY	螺杆式两级压缩油冷式 Screw two-stage compressor-oil-cooled type	26.5/18	160kW	2940×1700×2100	2800	4
AHLC30/18DY	螺杆式两级压缩油冷式 Screw two-stage compressor-oil-cooled type	30/18	185kW	2940×1700×2100	3000	4
AHLC20/18DY	螺杆式单级压缩油冷式 Screw single-stage compressor-oil-cooled type	20/18	185kW	2940×1700×2100	3000	4
AHLC24/14DY	螺杆式单级压缩油冷式 Screw single-stage compressor-oil-cooled type	24/14	185kW	2940×1700×2100	3000	4
AHLC33/18DY	螺杆式两级压缩油冷式 Screw two-stage compressor-oil-cooled type	33/18	250kW	3460×2050×2600	3500	3
AHLC31/25DY	螺杆式两级压缩油冷式 Screw two-stage compressor-oil-cooled type	31/25	250kW	3460×2050×2600	3500	3

* 规格参数及外形尺寸因产品改良会有所变动，恕不另行通知！* Specifications and dimensions are subject to change without prior notice due to product improvement.



艾玛压缩机在国内具有较完善的经销商服务体系及5个公司直属售后服务办事处，海外40多个国家分布约130家经销商。可有效对接客户及国内外各种订单，并提供及时有效的售后服务。

AirHorse Compressor has a complete dealer service system in China and 5 after-sales service offices directly under the headquarters, and we have about 130 dealers in more than 40 countries overseas. It can effectively provide service for our customers and process various orders in China and abroad market, we will provide timely and effective after-sales service for you.