

# 水润滑无油螺杆空压机参数表

## WATER LUBRICATION OIL-FREE SCREW AIR COMPRESSOR TECHNICAL PARAMETERS TABLE

型号 Model	排气压力 Discharge Pressure (MPa)	流量 Air Flow (m³/min)	电机功率 Motor Power (KW/HP)	噪音 Noise (dB)	冷却水 进出口 Cooling Water Inlet and Outlet	冷却水量 Qty of Cooling Water (T/H)	润滑水量 Qty of Lubricating Water (L)	空气 出口 Air Outlet	重量 Weight (KG)	外形尺寸 Dimension (L×W×H) (mm)
AHW-7A	0.8	0.78	5.5/7.5	57	3/4"	/	10	3/4"	220	900*800*1100
	1.0	0.65								
AHW-10A	0.8	1.17	7.5/10	57	3/4"	/	10	3/4"	270	900*800*1100
	1.0	1.05								
	1.25	0.81								
AHW-15A	0.8	1.72	11/15	60	1"	/	26	3/4"	435	1300*900*1300
	1.0	1.42								
	1.25	1.10								
AHW-20A	0.8	2.43	15/20	60	1"	/	26	3/4"	450	1300*900*1300
	1.0	2.17								
	1.25	1.80								
AHW-25A	0.8	3.13	18.5/25	63	1"	/	30	1"	535	1400*1100*1300
	1.0	2.82								
	1.25	2.05								
AHW-30A	0.8	3.70	22/30	63	1"	/	30	1"	550	1400*1100*1300
	1.0	3.21								
	1.25	2.78								
AHW-40A	0.8	5.20	30/40	66	1½"	/	40	1¼"	730	1500*1100*1350
	1.0	4.43								
	1.25	3.63								
AHW-50A	0.8	6.50	37/50	66	1½"	/	40	1¼"	750	1500*1100*1350
	1.0	5.33								
	1.25	4.77								
AHW-60A/W	0.8	8.30	45/60	68	1½"	/	90	2"	1200 1950	2100*1300*1700(A) 1800*1360*1620(W)
	1.0	6.30								
	1.25	5.56								
AHW-75A/W	0.8	10.30	55/75	69	1½"	10	100	2"	1200 1050	2100*1300*1700(A) 1800*1360*1620(W)
	1.0	8.55								
	1.25	7.67								
AHW-100A/W	0.8	13.00	75/100	72	1½"	/	100	2"	1650 1250	2180*1380*1680(A) 1800*1360*1620(W)
	1.0	11.50								
	1.25	9.70								
AHW-120A/W	0.8	16.60	90/120	73	1½"	20	120	2½"	2350 1850	2800*1700*1900(A) 2200*1700*2000(W)
	1.0	14.66								
	1.25	12.60								
AHW-150A/W	0.8	20.20	110/150	77	2"	20	120	2½"	3000 2250	2800*1700*1900(A) 2200*1700*2000(W)
	1.0	16.66								
	1.25	15.56								
AHW-175A/W	0.8	22.52	132/175	77	2"	20	120	2½"	3500 2600	2970*1730*2250(A) 2200*1700*2000(W)
	1.0	19.97								
	1.25	16.90								
AHW-220W	0.8	28.11	160/220	79	3"	160	160	DN 80	3900	2700*1800*1970
	1.0	25.45								
	1.25	22.52								
AHW-250W	0.8	31.32	185/250	79	3"	160	160	DN 80	4050	2700*1800*1970
	1.0	29.00								
	1.25	25.21								
AHW-300W	0.8	39.60	220/300	80	4"	200	200	DN 100	4400	2700*1800*1970
	1.0	35.70								
	1.25	29.63								
AHW-350W	0.8	45.00	250/350	80	4"	200	200	DN 100	4800	2700*1800*1970
	1.0	40.00								
	1.25	33.97								



**WATER  
LUBRICATION  
OIL-FREE  
SCREW AIR COMPRESSOR**

**水润滑无油  
螺杆空压机**

**Airhorse 艾玛**

广州艾玛压缩机有限公司 GUANGZHOU AIRHORSE COMPRESSOR CO.,LTD

办公室: 广州市黄埔区新阳西路38号生广广场4栋1503-1505室

工厂: 广州市增城区中新镇迳贝路8号

OFFICE ADDRESS: Room 1503-1505, Building 4, Shengsheng Plaza, No. 38 Xinyang West Road, Huangpu District, Guangzhou

FACTORY ADDRESS: No.8, Jingbei Road, Zhongxin Town, Zengcheng District, Guangzhou China

TEL: 86-20-38090459 \ 32376170 FAX: 86-20-38090400 \ 32376096

www.ahaircompressor.com export@ahaircompressor.com WHATSAPP 销售热线 +86 137 2522 4016 / 售后热线 After-Sales Hotline +86 181 4486 2868



▲ 请 扫描 ▲ WHATSAPP

\*温馨提示: 本参数表仅供参考, 本公司可能对相关参数进行调整, 如有变动, 恕不另行通知, 若有不明处, 欢迎来电咨询。

\*FRIENDLY REMINDER: This parameter list is for reference only. We may adjust the related parameter. if there is any change, we will not inform you otherwise. If you do not know, please call us.

\*温馨提示: 本公司产品标准适用于海拔1000米以下地区。若使用环境海拔超过1000米, 欢迎来电咨询, 进行定制化配置, 以确保设备性能与运行安全。

\*FRIENDLY REMINDER: The standard specifications of our products are applicable to regions with an altitude below 1,000 meters. For usage environments exceeding 1,000 meters above sea level, please feel free to contact us for customized configurations to ensure optimal equipment performance and operational safety.

**Airhorse®**  
**艾玛压缩机**



广州艾玛压缩机有限公司  
GUANGZHOU AIRHORSE COMPRESSOR CO.,LTD

**AirHorse**  
艾玛压缩机

**优异的性能·源自全球顶尖的产品配置**  
EXCELLENT PERFORMANCE TOP CONFIGURATION

大的排气量  
Large Displacement

低噪音  
Low Noise

高效率  
High Efficiency



对环境0污染  
压缩空气洁净安全  
No Pollution To  
The Environment  
Purer Compressed Air

无油保证ISO8573 0  
级空气质量标准  
Oil-free ISO8573  
Class 0 Air  
Quality Standard

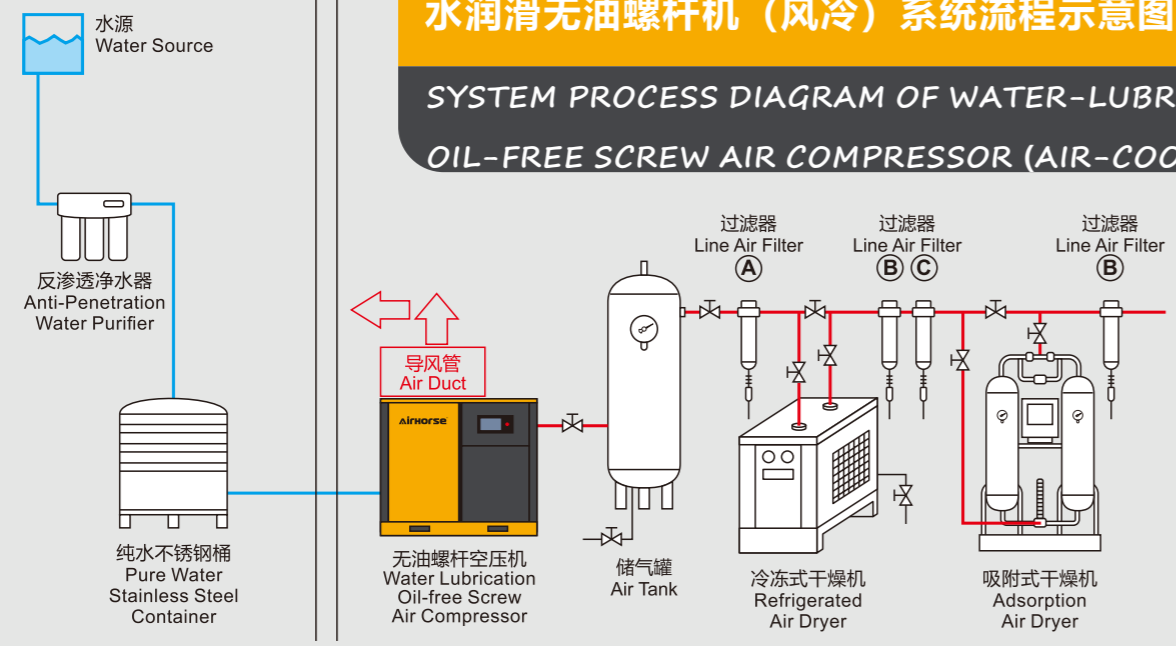
自润滑轴承  
Self Lubricating  
Bearing

真正的无油  
不锈钢压缩转子  
Oil-free Stainless  
Steel Rotor

长期连续  
稳定运行  
Continuously  
Stable Running

接近等温压缩  
Low Temperature  
Compression  
(Similar Ambient  
Temperature)

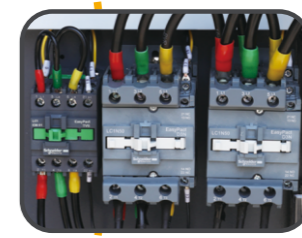
水润滑无油螺杆机（风冷）系统流程示意图  
SYSTEM PROCESS DIAGRAM OF WATER-LUBRICATED  
OIL-FREE SCREW AIR COMPRESSOR (AIR-COOL)



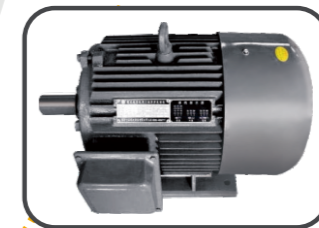
自主开发的智能化  
节能控制系统  
Intelligent Energy  
Saving Control System



丹麦DANFOSS  
电磁阀  
Denmark DANFOSS  
Solenoid Valve



顶级西门子  
施耐德控制元件  
Top Siemens/Schneider  
Control Components



高效高性能  
优异电机  
High Efficiency and  
High Performance Motor



德国SCHAEFFLER轴承  
瑞典SKF轴承  
Germany Schaeffler Bearing  
Swedish SKF Bearing

# 水润滑无油螺杆压缩机技术优势

## WATER LUBRICATION OIL-FREE SCREW AIR COMPRESSOR TECHNICAL ADVANTAGE

12  
"12" More  
Advantages

**1** 采用第五代无油螺杆主机技术，压缩机主机及系统采用不锈钢合金，实现了从铜主机到不锈钢主机的技术超越。  
With the fifth generation technology of oil-free screw air end, the air end is stainless steel alloy, thus the technological transcendence from the copper air end to the stainless air end.

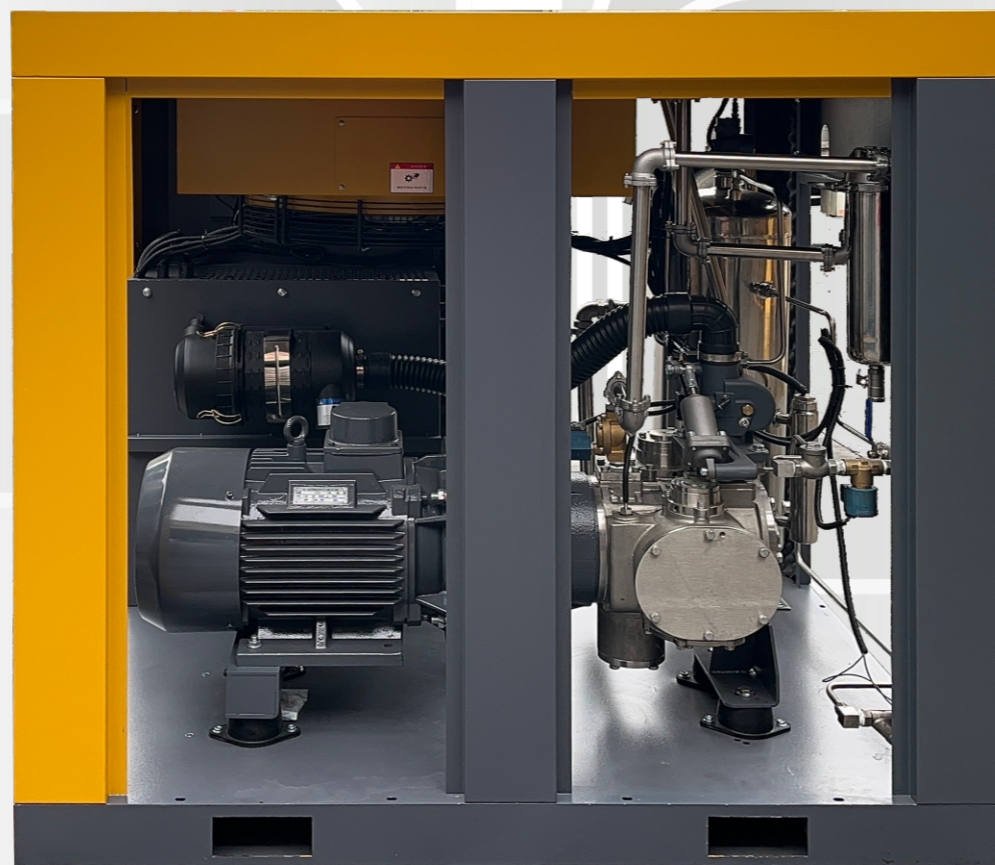
**2** 整机采用集成设计，没有繁杂的管路和线路，故障点更少，更稳定。  
Integrated design, no complex pipe and electric line. Fewer failure, more stable.

**3** 更少的维护耗材(空气过滤滤芯、水过滤滤芯)，维护简便，保证更少的维护费用。  
Less maintenance consumables (Air filter, water filter), Easy maintenance, less maintenance costs.

**4** 压缩机系统绝对无油，没有任何油污风险，是压缩空气无油的保证。  
Absolutely oil free, No risk of oil pollution, Is the guarantee of oilless compressed air.

**5** 等温压缩，容积效率更高。相比二级干式无油螺杆机平均节能15%以上，相比其一级压缩平均节能25%以上，运行温度小于50°C，没有被灼伤的风险。  
Ambient temperature compression, Higher efficiency, the average energy saving is more than 15% compared with two stage dry oil-free screw machine, 25% saving compared to single stage dry oil-free. The Operation temperature less than 50°C, No risk to burned.

**6** 全数控智能精密的加工技术以及主机运行受力平衡，保证更低的噪音、更小的震动，同时保障更长的使用寿命。  
CNC intelligent precision machining technology and High balance of air ends operation, Guarantee lower noise, smaller vibration, Longer life.



**7** 更宽的压力范围：2bar-40bar  
Pressure including: 2bar-40bar

**8** 相同功率的水润滑螺杆压缩机比干式无油螺杆压缩机排气量平均大10%以上。  
10% air flow higher than dry oil free screw air compressor in same power.

**9** 操作更加简单方便，采用PLC智能控制，具有自动故障检测、故障预警、保养提醒、自动保护功能，可实现24小时无人值守，可实现远程控制功能。  
Easy operation, PLC controlled, Automatic fault detection, Fault warning, Maintenance reminder, Automatic protection, 24 hours unattended, Remote control achieved.

**10** 压缩空气经过润滑水的清洗，更加洁净，可以直接用于呼吸使用，饱和压缩空气的露点更低，压缩空气的含水量比普通干式螺杆空压机平均低25%以上。  
Compressed air is cleaned by lubricating water, More clean, Can be used directly for breathing, the dew point more lower, The water content of compressed air is 25% lower than dry screw air compressors.

**11** 专利主机优化设计，大转子，低转速(3000r/min以内)，没有齿轮箱，采用直连驱动，相比干式无油螺杆(10000r/min-20000r/min)更低转速，更长寿命。  
Air end optimization design, big rotor, low RPM(3000r/min), no gear, direct driven. The RPM is more lower, and life is more longer than dry oilless screw.

**12** 可实现定期自动换水和自动系统清洗功能，压缩机内部更加整洁、卫生。  
Regular automatic water change and automatic system cleaning, The compressor is cleaner and hygienic.

选择艾玛·选择好品质

CHOOSE AIRHORSE, CHOOSE QUALITY

# 严谨的制造工艺

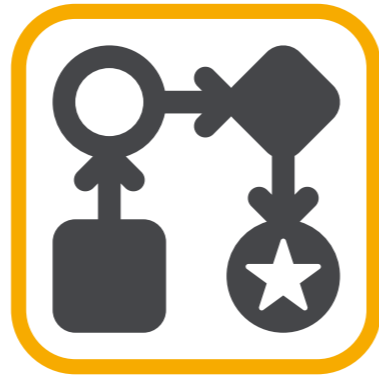
## RIGOROUS MANUFACTURING PROCESS



### 1 严格的工艺生产 制造流程

STRICT  
MANUFACTURING  
PROCESS

每个零部件严格检测，精益求精，从原材料到零部件成品每一道程序严格把控，确保每个零部件达到优等品，各个零部件优化设计，保证更经久耐用。  
Every component is strictly tested, strictly controlled on every procedure from raw material to assemble. Ensure each components is superior quality to ensure durability.



### 2 整机超静音设计

MACHINE IS  
ULTRA-QUIET  
DESIGN

整机机箱采用超静音设计，低转速大风量冷却风机，采用加大型冷却器减少空气对流摩擦，同时具有优秀的冷却效果。  
The machine is ultra-quiet design, low-speed and large-volume cooling system, Large-scale cooler to reduce air convection friction to make excellent cooling effect.



### 3 人性化结构设计

HUMANIZED  
STRUCTURE  
DESIGN

人性化结构设计，简化安装，同时后续维护保养更加便利，极低的维护费用，无需专业人员，用户亦可经专业指导自行维护、保养，便于普及推广。  
The humanized structure design simplified the installation, easy maintenance, low maintenance cost. User can do maintenance by themselves.



### 4 系统及压缩空气 超级洁净

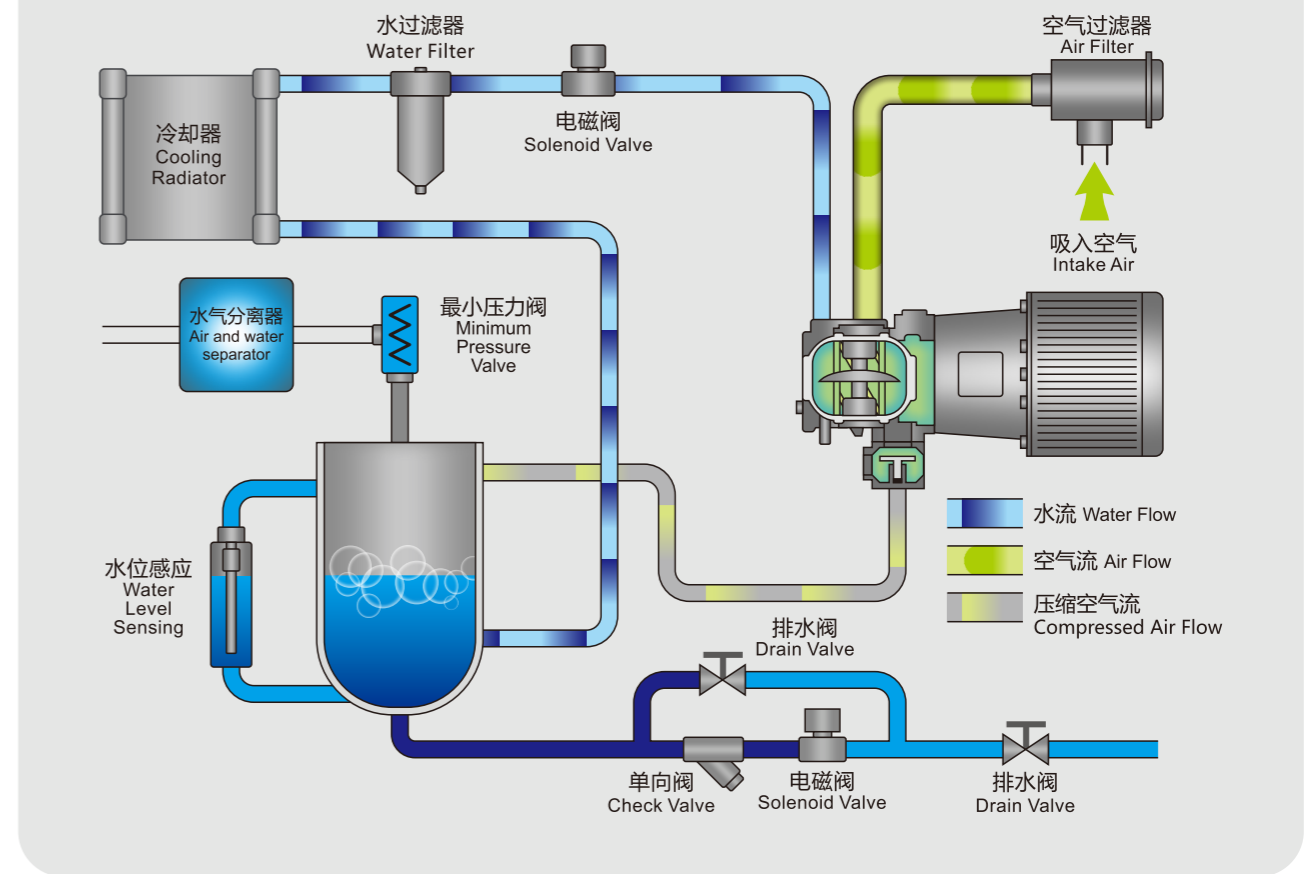
COMPRESSED AIR  
SUPER CLEAN

整机系统内部均采用不锈钢合金材料，保证耐用不腐蚀，具有超长的使用寿命，保证压缩空气“0”污染，更加节能、稳定、绿色环保。  
The machine is made of stainless steel alloy material to ensure durability and non-corrosion. Its extremely long service life, guarantees no pollution of compressed air, and is more energy-saving, stable and environment friendly.



## 压缩机组系统流程图

SYSTEM FLOW DIAGRAM OF COMPRESSOR UNIT



## 水润滑无油螺杆机（水冷）系统流程示意图

SYSTEM PROCESS DIAGRAM OF WATER-LUBRICATED OIL-FREE SCREW AIR COMPRESSOR (WATER-COOLING)

