

应用领域

APPLICATION FIELD

AirHorse
艾玛压缩机

艾玛双螺杆鼓风机广泛应用于食品制造，生物工程，污水处理，制药，喷涂，电镀，纺织等行业，来达到干燥、除尘、发酵、蒸发蒸馏、气力输送的作用。

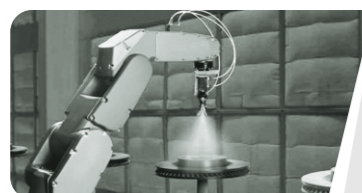
AirHorse Double Screw Blowers are widely used in food manufacturing, Biological Engineering, wastewater treatment, Pharmaceutical, Spraying, plating, Textile industry etc. To make the purpose of drying, Dust removal, Fermentation, Evaporative distillation, Pneumatic conveying etc.



食品制造
FOOD
MANUFACTURING



制药行业
PHARMACEUTICAL
INDUSTRY



喷涂行业
SPRAYING
INDUSTRY



生物工程
BIOLOGICAL
ENGINEERING



污水处理
SEWAGE
TREATMENT



纺织行业
TEXTILE
INDUSTRY



OIL-FREE SCREW BLOWERS

无油螺杆鼓风机

AHG10-350 (7.5-250kW/10-350HP)



售后服务
AFTER-SALES
SERVICE

目前艾玛压缩机有限公司销售和服务网络在中国划分了华东、华南、华西、华北和东北五个大区域，200多家网点。在主要城市都设立了办事机构，并有优秀的服务人员为您提供优质、快捷的服务。

AirHorse Compressor Co., Ltd. Sales and service network in China is divided into east China, south China, Hwaseo, north China and northeast five large regions, more than 200 outlets. In the main cities have set up offices, and have excellent service staff to provide you with quality, fast service.

AirHorse 艾玛

广州艾玛压缩机有限公司

办公室：广州市天河区粤垦路611-619号力达广场A1栋608-610室

工厂：广州市增城区中新镇逢贝路8号

GUANGZHOU AIRHORSE COMPRESSOR CO.,LTD

OFFICE ADDRESS : Room 608-610, Lida Plaza, No.611-619 Yueken Road, Tianhe District, Guangzhou China

FACTORY ADDRESS : No.8, Jingbei Road, Zhongxin Town, Zengcheng District, Guangzhou China



*免责声明：广州艾玛压缩机有限公司保留更改产品设计与规格的权利产品的最终解释权归本公司所有，如有变更，届时恕不另行通知，请以产品实际为准

AirHorse
艾玛压缩机



广州艾玛压缩机有限公司

GUANGZHOU AIRHORSE COMPRESSOR CO.,LTD

www.ahaircompressor.com ✉ export@ahaircompressor.com

销售热线 Sales Hotline 400-874-9090 / 售后热线 After-Sales Hotline 400-894-7070

YOUR CHOICE, OUR PROMISE
—— 您的选择·我们的承诺 ——



广州艾玛压缩机有限公司是专业从事空气压缩机,螺杆鼓风机系统设备研发和生产的高新技术企业,主要产品包括螺杆式空压机、螺杆鼓风机,干燥机、储气罐、管道过滤器等。

为适应时代的节能环保需求,领先同行,广州艾玛压缩机有限公司以满足客户需求为技术发展之核心,不断开发研制,现推出艾玛无油双螺杆鼓风机系列,高效率,低转速,低噪音的特点,帮您节能省电高达60%,让您得到更纯净的空气。

Guangzhou AirHorse Compressor Co.,Ltd. is a high-tech enterprise specializing in R&D and production of air compressor and screw blower system equipment. The main products include screw air compressor, screw blower, air dryer, air tank and pipeline filter.

In order to meet the energy conservation, environmental protection and customers' demand, now we recommend AirHorse brand oil-free double screw blowers, which is high efficiency, low speed, low noise, can help you save energy up to 60% and get purer air.



① 高稳定性, 24小时持续运作

High Reliability, 24 hours running

② 基于内压缩, 对比罗茨鼓风机, 主机节能提升至少30%

Screw type reduces energy cost by an average of 30%

③ 高效变频节能, 系统优化节能, 进一步省电

Permanent Magnet synchronous Frequency technology offers extra energy saving

④ 图文触屏控制, 提供远程操作、联机及多种保护功能

PLC control, remote operation, Multi-machine control supplied



能耗优势

ENERGY-SAVING

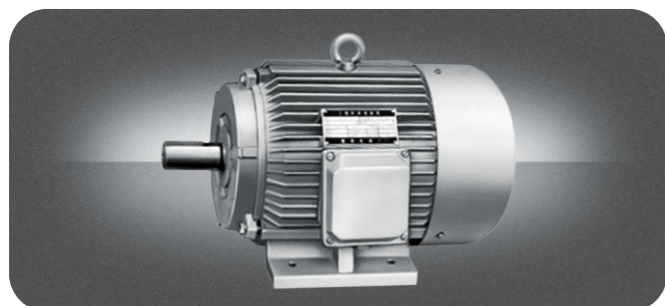
基于螺杆转子的内压缩特点, 艾玛无油螺杆鼓风机对比传统罗茨鼓风机, 从0.5BAR压力开始能耗减少约25%, 压力越高, 节能效果越大, 可高达60%。
The AirHorse AHG range reduce energy cost at least 25% at 0.5bar, energy saving will reach more than 60% when pressure high to 0.8bar-1.5bar.

技术优势

LATEST TECHNOLOGY

独立的研发团队, 拥有自主技术, 品质更坚实, 售后更有优势保障; 适合高温差、多粉尘、高湿度的恶劣气候环境。
AirHorse guarantees exceptional reliability, Latest technology, High Quality controlled. Which supply best after sold service. AirHorse screw Blowers Suitable for harsh environment with high temperature, dust and high humidity.





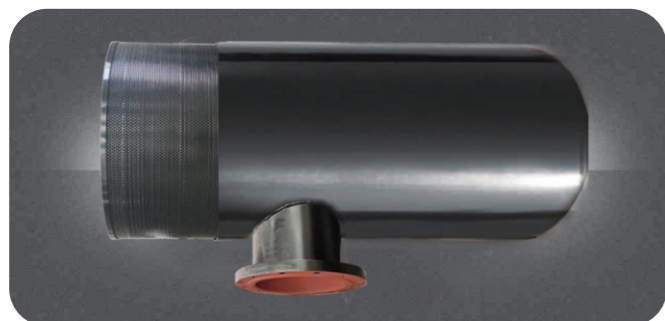
永磁同步电机 | PMSM MOTOR

高效率永磁同步电机，启动转矩大；根据鼓风机性能曲线专门设计，提高效率，降低比功率，电机55°C可长期运行，防护等级为IP54。
High efficiency Permanent magnet synchronous motor, Large starting torque, Specially designed According to blower performance, Improve efficiency, Reduce specific power, The motor can run for a long time at 55 °C, IP54 Protection.



消音系统 | SILENCING SYSTEM

消音器配合低噪音型线机头，驱动部件采用震动绝缘构造，并降低进气排气音，实现低噪生产空间。
Silencer with low noise screw air end, Drive components are constructed with vibration insulation, reducing the intake and exhaust sound, which make the machine running at very low noise.



进气过滤器 | AIR FILTER

进气过滤精度可以达到15um，压力损失不超过500Pa，洁净进气，低压降进，高效率，进气排音设计，辅助隔音罩，噪音更低。
Intake air filtration can reach 15um, Pressure loss does not exceed 500Pa, Clean intake air, Low pressure drop, high efficiency, Intake sound design, soundproof cover, make the whole machine silence.



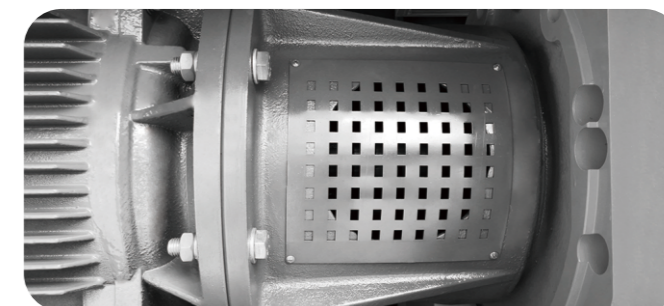
控制系统 | CONTROL SYSTEM

7英寸彩色图文触屏控制，界面友好，操作简便；24小时预警通知，提供远程操作支持；智能动态显示，故障分析恢复，多机联控；逆转保护，多点温度检测和控制保护，自动调节负荷率控制保护等。
Touch 7 inch display, easy operation, 24-hour warning notice, remote operation support. Intelligent dynamic display, Failure analysis recovery, Multi-machine joint control, Multi-point temperature detection and control protection, Load factor automatic adjusting etc.



变频器 | FREQUENCY CONVERTER

采用优质变频器，实现软启动、变频调速、提高运转精度、改变功率因数以及过流/过压/过载保护等功能。
High quality frequency converter, Soft start, Frequency, Change power factor and Over current, over pressure, over load protection etc.



系统化 | SYSTEMATIZATION

优异性能部件，经过系统化设计组合，使机组运行故障大幅降低，实现更高排气压力，出气量更加充分，耗能比处于鼓风机行业先进行列。
Design combination with excellent performance parts, reducing operating failures, Achieve higher exhaust pressure, More flow output, Energy consumption ratio is first in the blower industry.



螺杆鼓风机和罗茨风机都是属于容积式风机，如果两者要进行比较的话，可以简单归结为压缩原理的不同，螺杆鼓风机的**节能、稳定、低噪优势**更为突出。

Both Screw Blower and Roots Blower is Positive displacement fan, If the two are to be compared, Can be simply boiled down to the difference in compression principle, Screw Blower is more energy saving, stability, low noise.

罗茨风机在运转和输送空气的过程中，转子间的腔体不发生容积变化，压力来自于把大量的空气强制送入一个体积比较小的外部腔体中，如：管道或储气罐中，外部腔体中空气的密度不断提高，从而产生压力，通常称之为“外压缩”。罗茨鼓风机结构简单，强制送风（送风量不受排气压力影响），自身不产生压力。

When Roots Blower In the process of running and conveying air, No change in volume between the rotors, The pressure comes from forcing a large amount of air into a relatively small external cavity. for example: In a pipe or a air tank, The density of air in outside continues to increase, and pressure produce. Commonly referred to as "external compression". Roots Blower is simple structure , Forced air supply (air supply is not affected by exhaust pressure), No pressure on itself.

螺杆鼓风机的工作原理就跟罗茨鼓风机有些区别了，空气同样是吸进来，再排出去，吸气时，螺杆和螺杆之间的空腔是大的，随着螺杆转子的转动，腔体体积会逐渐变小，当气体排出去后，腔体容积会变得很小很小。也就是说，在旋转过程中，就相当于把2m³的气压缩成1m³的气，压力随之就提高，也就是说这个压力的提升不是来自于外围的管网，而是来自于主机腔体内部容腔的变化，也就是所谓的内压缩。

Screw Blower working principle is different from Roots Blower, The air is sucked in and discharge. When air is sucked in, there is large space between rotors, With the rotation of the rotor, the space gradually become smaller, when the air exhaust, the space become very small. That is compressing 2m³ of air into 1m³ of air during rotating, the pressure goes up. The high pressure not come from outside pipe, its come from the air end space change. This is Internal compression.

原理对比

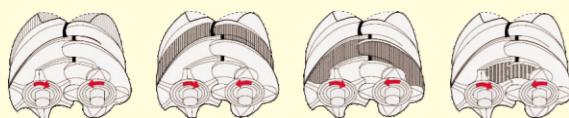
PRINCIPLE COMPARISON

同属于容积式风机 They are positive displacement fan

螺杆鼓风机运行原理
Operating principle of Screw Blower



双螺杆结构
Double Screw Structure



连续内压缩，转子运转中，周期性产生容积变化，完成压缩过程，并建立压力，排放到管网。
Continuous compression,
When Rotor running, Volume changes periodically, Complete the compression process, And build pressure, Discharge to pipe.

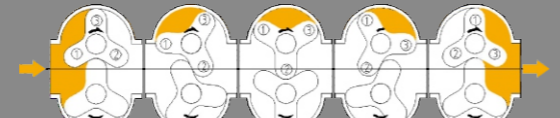
内压缩 · 效率高 · 供气平稳
COMPRESSION · HIGH EFFICIENT
STABLE AIR SUPPLY

罗茨鼓风机运行原理
Operating principle of Roots Blower



三叶型
Trefoil Type

两叶型
Two-leaf Type



转子转动输送空气，输送过程无容积变化，依靠管网背压建立压力，无内压缩过程。
Rotor rotates to deliver air,
No volume change during transport, Establish pressure on pipe net work, No compression process.

无内压缩 · 效率较低
NO INTERNAL COMPRESSION
LOW EFFICIENT

OIL-FREE SCREW BLOWERS
无油螺杆鼓风机

CE ISO 9001 UL E-S

AHG 30-425(22-315KW/30-425HP)
AHG 30-425 VSD(22-315KW/30-425HP)

工作压力每增加0.1bar
0.1bar Working Pressure Increased

罗茨鼓风机
ROOTS BLOWERS

出口温升约10度
About 10 Degree
of Outlet Temperature

VS

螺杆鼓风机
SCREW BLOWERS

出口温升约8度
About 8 Degree
of Outlet Temperature

20%

螺杆鼓风机出口温升低

20% OUTLET TEMPERATURE
LOWER OF SCREW BLOWERS

—— 螺杆鼓风机 ——
**脉冲低
寿命长**
LOW PULSE AND LONG LIFE
OF SCREW BLOWERS

罗茨鼓风机
ROOTS BLOWERS

VS

螺杆鼓风机
SCREW BLOWERS

完全依靠背压，回流产生脉冲；
即使三叶比两叶脉冲降低，
但脉冲扭矩依旧会产生间歇性噪音与震动。

Producing pulse fully rely on Back pressure
and Reflux. Even the three leaves pulses are lower
than the two leaf, But the Pulse torque will produce
intermittent noise and vibration.

内压缩，排气稳定，
压力脉冲低，
设备震动降低，寿命延长。

Internal compression,
Stable exhaust,
low pulse, low vibration,
long life.

罗茨鼓风机
ROOTS BLOWERS

VS

螺杆鼓风机
SCREW BLOWERS

一般比样本标定流量
小5%

Air flow is 5% less than true air flow

真实流量

True air flow

—— 螺杆鼓风机 ——
真实流量

TRUE AIR FLOW OF
SCREW BLOWERS

24_h

螺杆鼓风机24小时运行

24 HOURS RUNNING
OF SCREW BLOWERS

罗茨鼓风机
ROOTS BLOWERS

VS

螺杆鼓风机
SCREW BLOWERS

温升高，散热模式单一，
较多采用一用一备，
交替使用，长时连续运行导致故障率高。

High temperature, simple Cooling mode,
always one machine use, another backup,
Alternate running, high failure rate
if long time operation.

机体配备散热夹套，运行温度更低，
更稳定，可24小时运行，
保守使用可采用多备一。

High efficiency cooling,
low temperature, more stable,
can running 24 hours a day.
No need backup.

罗茨鼓风机
ROOTS BLOWERS

VS

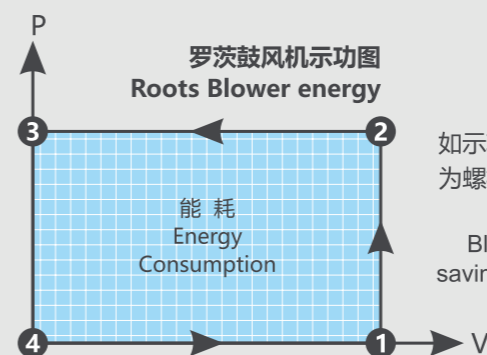
螺杆鼓风机
SCREW BLOWERS

即使采用消音器
罗茨鼓风机噪音值
最高可达116-118分贝
Even add air filter
the noise can much
116-118DB

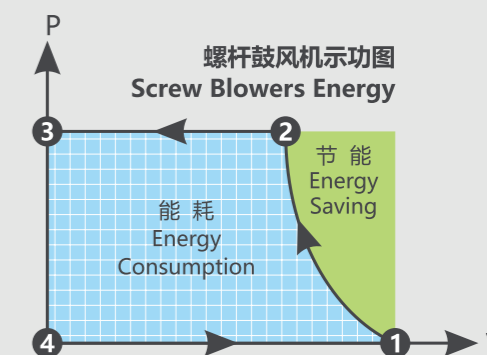
一般可控制在
60-85分贝左右
Usually controlled noise to
60-85DB

—— 螺杆鼓风机 ——
噪音低

LOW NOISE OF
SCREW BLOWERS



如示功图所示，蓝色区域
为螺杆鼓风机与罗茨鼓风
机做功能耗。
Blue area is energy
saving of Screw Blowers.



35%

螺杆鼓风机节能

More than 35% Energy Saving
in Screw Blowers

在实际中，设备所需的压力越高，
螺杆鼓风机的节能效果即越显著：
0.5bar压力下，节能达到25%；
0.8bar压力下，节能即可达到35%。

The higher pressure of usage,
the more energy saving:
0.5bar, Energy saving more than 25%,
0.8bar, Energy saving more than 35%.

节能案例

ENERGY SAVING CASE

45KW / 0.4bar

螺杆鼓风机
SCREW BLOWERS

排气量：43.5m³/min

FAD is 43.5m³/min

VS

罗茨鼓风机
ROOTS BLOWERS

排气量：33m³/min
实际用气量：26m³/min

FAD is 30m³/min
Actually use 26m³/min

相同功率、压力，气量高出30%，节能高出50%
SAME POWER, PRESSURE, AIR FLOW IS 30% HIGHER,
ENERGY SAVING MORE THAN 50%

艾玛无油螺杆鼓风机技术参数表 / OIL-FREE SCREW BLOWERS PARAMETER LIST

型号/Model	压力/Pressure (Bar)	排气量/Air Flow (m³/h)	电机功率/Motor Power (KW)	排气口尺寸 Air Outlet Size	外形尺寸/Size (L*W*H)mm	重量/Weight (KG)
AHG-10A-4	0.4	468	7.5/10	DN100	1550*900*1400	520
AHG-10A-6	0.6	270	7.5/10	DN100	1550*900*1400	520
AHG-10A-8	0.8	222	7.5/10	DN100	1550*900*1400	520
AHG-10A-10	1.0	129	7.5/10	DN100	1550*900*1400	520
AHG-20A-4	0.4	1080	15/20	DN150	1550*900*1400	750
AHG-20A-6	0.6	780	15/20	DN150	1550*900*1400	750
AHG-20A-8	0.8	610	15/20	DN100	1550*900*1400	650
AHG-20A-10	1.0	435	15/20	DN100	1550*900*1400	650
AHG-20A-12	1.2	310	15/20	DN100	1900*1210*1740	875
AHG-20A-15	1.5	237.3	15/20	DN100	1900*1210*1740	875
AHG-30A-4	0.4	1491	22/30	DN150	1750*1100*1700	1000
AHG-30A-6	0.6	1192	22/30	DN150	1750*1100*1700	875
AHG-30A-8	0.8	855.1	22/30	DN150	1750*1100*1700	875
AHG-30A-10	1.0	832.6	22/30	DN150	1750*1100*1700	875
AHG-30A-12	1.2	542.2	22/30	DN100	1900*1210*1740	875
AHG-30A-15	1.5	395.7	22/30	DN100	1900*1210*1740	875
AHG-40A-4	0.4	2144	30/40	DN200	2090*1300*1850	1250
AHG-40A-6	0.6	1573	30/40	DN150	2090*1300*1850	1250
AHG-40A-8	0.8	1232	30/40	DN150	1750*1100*1700	1000
AHG-40A-10	1.0	1000	30/40	DN150	1750*1100*1700	900
AHG-40A-12	1.2	738	30/40	DN150	1900*1210*1740	1000
AHG-40A-15	1.5	513.9	30/40	DN150	1900*1210*1740	900
AHG-50A-4	0.4	2380.7	37/50	DN200	2090*1300*1850	1250
AHG-50A-6	0.6	1885.8	37/50	DN200	2090*1300*1850	1250
AHG-50A-8	0.8	1555.3	37/50	DN150	2090*1300*1850	1250
AHG-50A-10	1.0	1210	37/50	DN150	1750*1100*1700	1250
AHG-50A-12	1.2	913.2	37/50	DN150	1900*1210*1740	1100
AHG-50A-15	1.5	729	37/50	DN150	1900*1210*1740	1100
AHG-60A-4	0.4	2860	45/60	DN250	2250*1430*2000	1650
AHG-60A-6	0.6	2366	45/60	DN200	2090*1300*1850	1250
AHG-60A-8	0.8	2112	45/60	DN200	2090*1300*1850	1250
AHG-60A-10	1.0	1660	45/60	DN150	2090*1300*1850	1250
AHG-60A-12	1.2	1244.8	45/60	DN150	2090*1210*1940	1200
AHG-60A-15	1.5	902	45/60	DN150	2090*1210*1940	1200
AHG-75A-4	0.4	3608	55/75	DN250	2250*1430*2000	1650
AHG-75A-6	0.6	2845	55/75	DN250	2250*1430*2000	1650
AHG-75A-8	0.8	2422	55/75	DN200	2090*1300*1850	1650
AHG-75A-10	1.0	2092.4	55/75	DN200	2090*1300*1850	1400
AHG-75A-12	1.2	1630.2	55/75	DN150	2250*1430*2020	1650
AHG-75A-15	1.5	1231.2	55/75	DN150	2090*1210*1940	1400
AHG-100A-4	0.4	5404	75/100	DN300	2450*1430*2231	2400
AHG-100A-6	0.6	4485	75/100	DN250	2250*1430*2000	2000
AHG-100A-8	0.8	3317	75/100	DN200	2250*1430*2000	1850
AHG-100A-10	1.0	2825	75/100	DN200	2250*1430*2000	1850
AHG-100A-12	1.2	2478.6	75/100	DN200	2250*1430*2020	1850
AHG-100A-15	1.5	1960	75/100	DN200	2250*1430*2020	1850
AHG-120A-4	0.4	6065.5	90/120	DN300	2450*1430*2231	3000
AHG-120A-6	0.6	5144.75	90/120	DN300	2450*1430*2231	2700
AHG-120A-8	0.8	4277.52	90/120	DN250	2250*1430*2000	2400
AHG-120A-10	1.0	3560	90/120	DN250	2250*1430*2000	1800
AHG-120A-12	1.2	2960	90/120	DN200	2450*1500*2250	2700
AHG-120A-15	1.5	2445	90/120	DN200	2250*1430*2020	1850
AHG-150A-4	0.4	7000	110/150	DN300	2900*1460*2300	3250
AHG-150A-6	0.6	5935.5	110/150	DN300	2900*1460*2300	3250
AHG-150A-8	0.8	5094	110/150	DN300	2450*1430*2231	2700
AHG-150A-10	1.0	4392	110/150	DN250	2450*1430*2231	2700
AHG-150A-12	1.2	3484	110/150	DN200	2450*1500*2250	2700

*注: 本参数表仅供参考, 本公司可能对相关参数进行调整, 如有变动, 恕不另行通知, 若有不明处, 欢迎来电咨询。ATTENTION: This parameter table is for reference only. Our company may adjust the relevant parameters, we will not notify if any change, if you have any questions, please feel free to contact me.

艾玛无油螺杆鼓风机技术参数表 / OIL-FREE SCREW BLOWERS PARAMETER LIST

型号/Model	压力/Pressure (Bar)	排气量/Air Flow (m³/h)	电机功率/Motor Power (KW)	排气口尺寸 Air Outlet Size	外形尺寸/Size (L*W*H)mm	重量/Weight (KG)
AHG-150A-15	1.5	2900	110/150	DN200	2450*1500*2250	2700
AHG-175A-4	0.4	7923	132/175	DN350	2900*1460*2300	3250
AHG-175A-6	0.6	6850	132/175	DN300	2900*1460*2300	3250
AHG-175A-8	0.8	6123	132/175	DN300	2900*1460*2300	3250
AHG-175A-10	1.0	5020	132/175	DN300	2450*1430*2231	2700
AHG-175A-12	1.2	3890	132/175	DN300	2450*1500*2250	2700
AHG-175A-15	1.5	3414	132/175	DN200	2450*1500*2250	2700
AHG-220A-4	0.4	10340	160/220	DN400	3250*1800*2300	3850
AHG-220A-6	0.6	7834.2	160/220	DN350	3250*1800*2300	3500
AHG-220A-8	0.8	6803.4	160/220	DN300	2900*1460*2300	3250
AHG-220A-10	1.0	6311.5	160/220	DN300	2900*1460*2300	3250
AHG-220A-12	1.2	5118	160/220	DN300	2900*1600*2300	3500
AHG-220A-15	1.5	3812	160/220	DN300	2450*1500*2250	2700
AHG-250A-6	0.6	10250	185/250	DN400	3250*1800*2300	4200
AHG-250A-8	0.8	8080	185/250	DN350	3250*1800*2300	3850
AHG-250A-10	1.0	6763	185/250	DN300	2900*1460*2300	3850
AHG-250A-12	1.2	5313	185/250	DN300	2900*1600*2300	3850
AHG-250A-15	1.5	4864	185/250	DN300	2900*1600*2300	3850
AHG-300A-8	0.8	10160	220/300	DN350	3250*1800*2300	4300
AHG-300A-10	1.0	8006.8	220/300	DN300	2900*1460*2300	3850
AHG-300A-15	1.5	5820	220/300	DN300	2900*1600*2300	3850
AHG-350A-10	1.0	10080	250/350	DN350	3250*1800*2300	4300

*注: 本参数表仅供参考, 本公司可能对相关参数进行调整, 如有变动, 恕不另行通知, 若有不明处, 欢迎来电咨询。ATTENTION: This parameter table is for reference only. Our company may adjust the relevant parameters, we will not notify if any change, if you have any questions, please feel free to contact me.

数据说话

PROVE WITH DATA

CHOOSE

艾玛螺杆鼓风机
SCREW BLOWERS

0.7 bar
压力 | Pressure

23.8 m³/min
风量 | Air Flow

电机功率: 37KW
Motor Power: 37KW
标定风量: 23.82m³/min
Standard Air Flow: 23.82m³/min
全年满负荷8000小时, 耗电296000度
Full load of 8,000 hours a year,
Power Consumption 296,000 Degrees



CHOOSE

罗茨鼓风机
ROOTS BLOWERS

电机功率: 55KW
Motor Power: 55KW
标定风量: 24.04m³/min
Standard Air Flow: 24.04m³/min
全年满负荷8000小时, 耗电440000度
Full load of 8,000 hours a year,
Power Consumption 440,000 Degrees

一年:
螺杆鼓风机节能144000度
能耗费用节省115200元

ONE YEAR:
SCREW BLOWER CAN SAVE POWER 144,000 DEGREES
SAVE ENERGY CONSUMPTION COST RMB115,200

数据采集因产品而异, 会有浮动, 实际产品以各自参数为准。Data collection varies from product to product and will be floating. The actual product is subject to the respective parameters.