

# 水润滑无油螺杆空压机参数表

## WATER LUBRICATION OIL-FREE SCREW AIR COMPRESSOR TECHNICAL PARAMETERS TABLE

100%无油螺杆空压机 Oil-Free Screw Air Compressor										
型号 Model	排气压力 Discharge Pressure (MPa)	流量 Air Flow (m³/min)	电机功率 Motor Power (KW/HP)	噪音 Noise (dB)	冷却水 进出口 Cooling Water Inlet and Outlet	冷却水量 Qty of Cooling Water (T/H)	润滑水量 Qty of Lubricating Water (L)	空气 出口 Air Outlet	重量 Weight (KG)	外形尺寸 Dimension (L×W×H) (mm)
AHW-7A/W	0.8	0.78	5.5/7.5	57	3/4"	1.5	10	3/4"	430	800x800x1100
	1.0	0.65								
AHW-10A/W	0.8	1.17	7.5/10	57	3/4"	2	10	3/4"	470	800x800x1100
	1.0	1.05								
	1.25	0.81								
AHW-15A/W	0.8	1.72	11/15	60	1"	2.5	26	3/4"	580	1200x800x1300
	1.0	1.42								
	1.25	1.10								
AHW-20A/W	0.8	2.43	15/20	60	1"	3.5	26	1"	620	1200x800x1300
	1.0	2.17								
	1.25	1.80								
AHW-25A/W	0.8	3.13	18.5/25	63	1"	4	30	1"	680	1400x1000x1520
	1.0	2.82								
	1.25	2.05								
AHW-30A/W	0.8	3.70	22/30	63	1"	5	30	1"	730	1400x1000x1520
	1.0	3.21								
	1.25	2.78								
AHW-40A/W	0.8	5.20	30/40	66	1½"	7	40	1½"	1100	1500x1150x1500
	1.0	4.43								
	1.25	3.63								
AHW-50A/W	0.8	6.50	37/50	66	1½"	9	40	1½"	1150	1500x1150x1500
	1.0	5.33								
	1.25	4.77								
AHW-60A/W	0.8	8.30	45/60	68	1½"	10	90	2"	1390	1800x1300x1750
	1.0	6.30								
	1.25	5.56								
AHW-75A/W	0.8	10.30	55/75	69	1½"	12	100	2"	1470	1800x1300x1750
	1.0	8.55								
	1.25	7.67								
AHW-100A/W	0.8	13.00	75/100	72	1½"	18	100	2"	1650	1800x1300x1750
	1.0	11.50								
	1.25	9.70								
AHW-120A/W	0.8	16.60	90/120	73	1½"	20	120	2½"	2350	2200x1550x1800
	1.0	14.66								
	1.25	12.60								
AHW-150A/W	0.8	20.20	110/150	77	2"	24	120	2½"	2480	2200x1550x1800
	1.0	16.66								
	1.25	15.56								
AHW-175A/W	0.8	22.52	132/175	77	2"	30	120	2½"	2600	2200x1550x1800
	1.0	19.97								
	1.25	16.90								
AHW-220A/W	0.8	28.11	160/220	79	3"	35	160	3"	3750	3000x1800x2100
	1.0	25.45								
	1.25	22.52								
AHW-250A/W	0.8	33.97	185/250	79	3"	38	160	3"	3900	3000x1800x2100
	1.0	29.00								
	1.25	25.21								
AHW-300A/W	0.8	39.67	220/300	80	4"	47	200	4"	4250	3100x1850x2100
	1.0	36.75								
	1.25	29.63								
AHW-350A/W	0.8	45.00	250/350	80	4"	53	200	4"	4650	3100x1850x2100
	1.0	39.67								
	1.25	33.97								

AW: A-Air Cooled  
W-Water Cooled

NOTE: 本公司产品不断改进, 保留产品参数更新的权利, 恕不另行通知。  
We reserve the right to update product specifications for improvement. If any change, it will be subject to change without notice.

**Airhorse 艾玛**

广州艾玛压缩机有限公司

办公室: 广州市天河区粤垦路611-619号力达广场A1栋608-610室

工厂: 广州市增城区中新镇迳贝路8号

**GUANGZHOU AIRHORSE COMPRESSOR CO.,LTD**

OFFICE ADDRESS: Room 608-610, Lida Plaza, No.611-619 Yueken Road, Tianhe District, Guangzhou China

FACTORY ADDRESS: No.8, Jingbei Road, Zhongxin Town, Zengcheng District, Guangzhou China

www.ahaircompressor.com ✉ export@ahaircompressor.com

销售热线 Sales Hotline 400-874-9090 / 售后热线 After-Sales Hotline 400-894-7070



**WATER  
LUBRICATION  
OIL-FREE  
SCREW AIR COMPRESSOR**

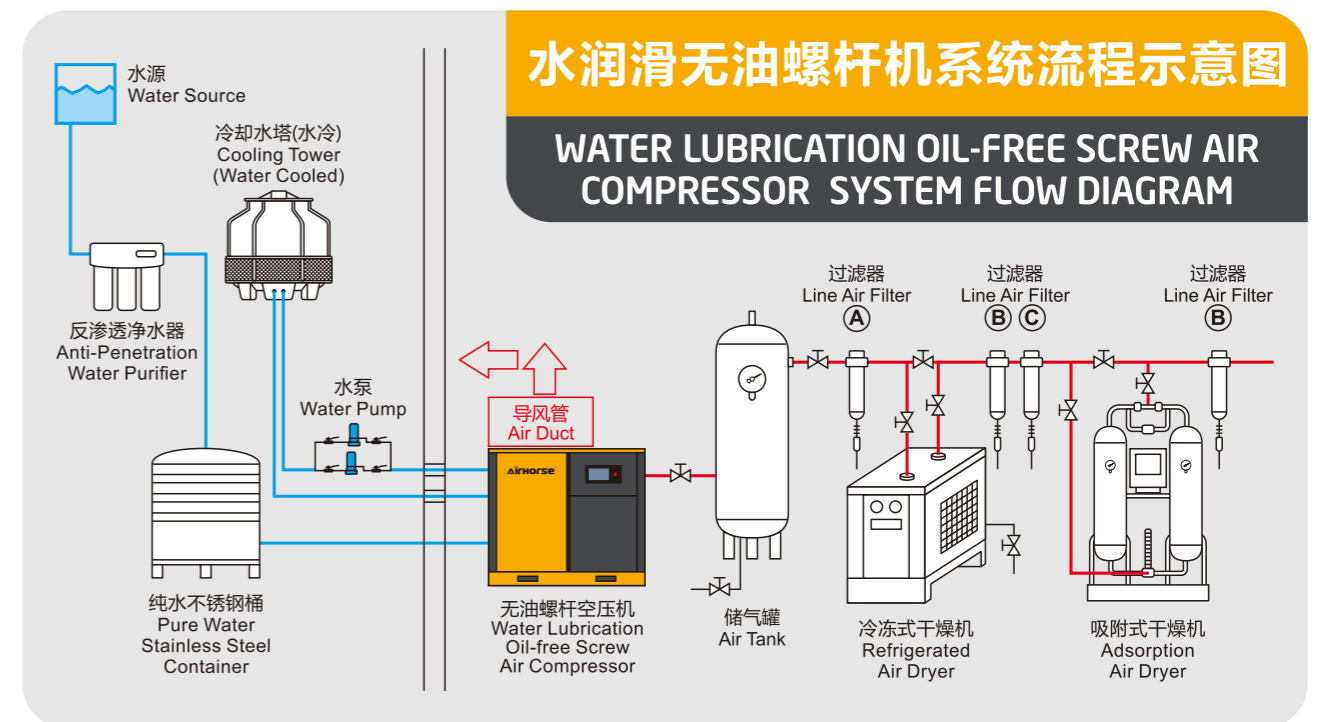
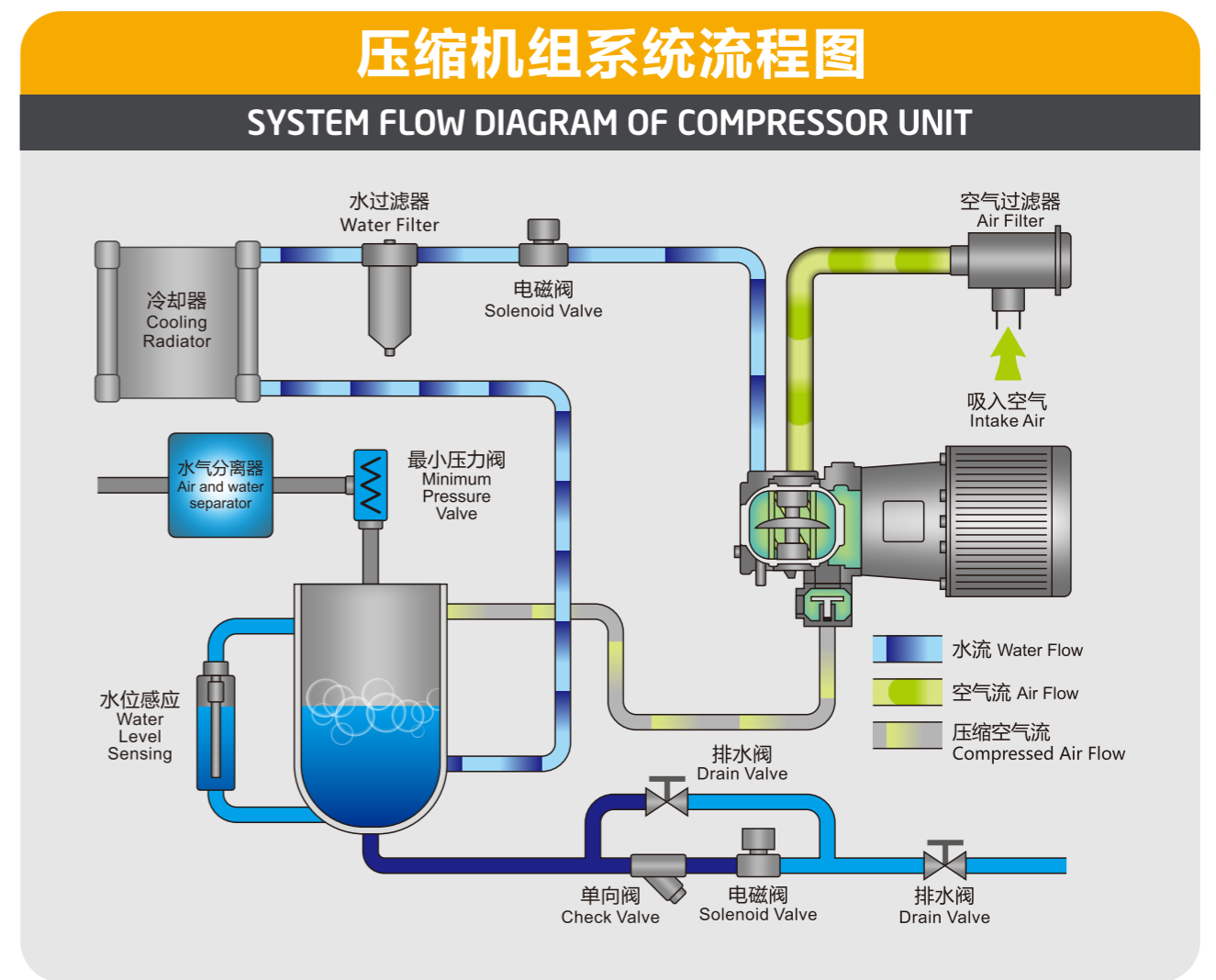
**水润滑无油  
螺杆空压机**

**Airhorse®**  
**艾玛压缩机**



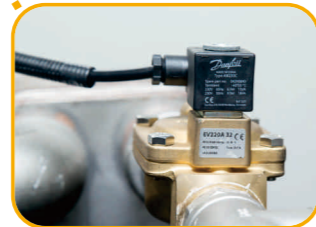
广州艾玛压缩机有限公司  
GUANGZHOU AIRHORSE COMPRESSOR CO.,LTD

\*免责声明: 广州艾玛压缩机有限公司保留更改产品设计与规格的权利, 产品的最终解释权归本公司所有, 如有变更, 届时恕不另行通知, 请以产品实际为准

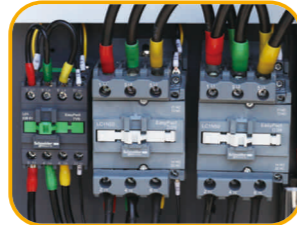




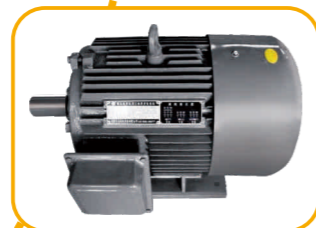
**自主开发的智能化  
节能控制系统**  
Intelligent Energy  
Saving Control System



**丹麦DANFOSS  
电磁阀**  
Denmark DANFOSS  
Solenoid Valve



**顶级西门子  
施耐德控制元件**  
Top Siemens/Schneider  
Control Components



**高效高性能  
优异电机**  
High Efficiency and  
High Performance Motor



**德国SCHAEFFLER轴承  
瑞典SKF轴承**  
Germany Schaeffler Bearing  
Swedish SKF Bearing

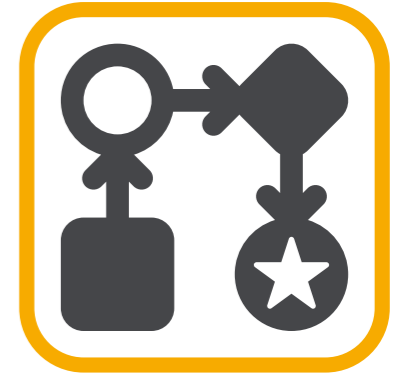
**1**

**严格的工艺生产  
制造流程**

STRICT  
MANUFACTURING  
PROCESS

每个零部件严格检测，精益求精，从原材料到零部件成品每一道程序严格把控，确保每个零部件达到优等品，各个零部件优化设计，保证更经久耐用。

Every component is strictly tested, strictly controlled on every procedure from raw material to assemble. Ensure each components is superior quality to ensure durability.



**2**

**整机超静音设计**

MACHINE IS  
ULTRA-QUIET  
DESIGN

整机机箱采用超静音设计，低转速大风量冷却风机，采用加大型冷却器减少空气对流摩擦，同时具有优秀的冷却效果。

The machine is ultra-quiet design, low-speed and large-volume cooling system, Large-scale cooler to reduce air convection friction to make excellent cooling effect.



**3**

**人性化结构设计**

HUMANIZED  
STRUCTURE  
DESIGN

人性化结构设计，简化安装，同时后续维护保养更加便利，极低的维护费用，无需专业人员，用户亦可经专业指导自行维护、保养，便于普及推广。

The humanized structure design simplified the installation, easy maintenance, low maintenance cost. User can do maintenance by themselves.



**4**

**系统及压缩空气  
超级洁净**

COMPRESSED AIR  
SUPER CLEAN

整机系统内部均采用不锈钢合金材料，保证耐用不腐蚀，具有超长的使用寿命，保证压缩空气“0”污染，更加节能、稳定、绿色环保。

The machine is made of stainless steel alloy material to ensure durability and non-corrosion. Its extremely long service life, guarantees no pollution of compressed air, and is more energy-saving, stable and environment friendly.

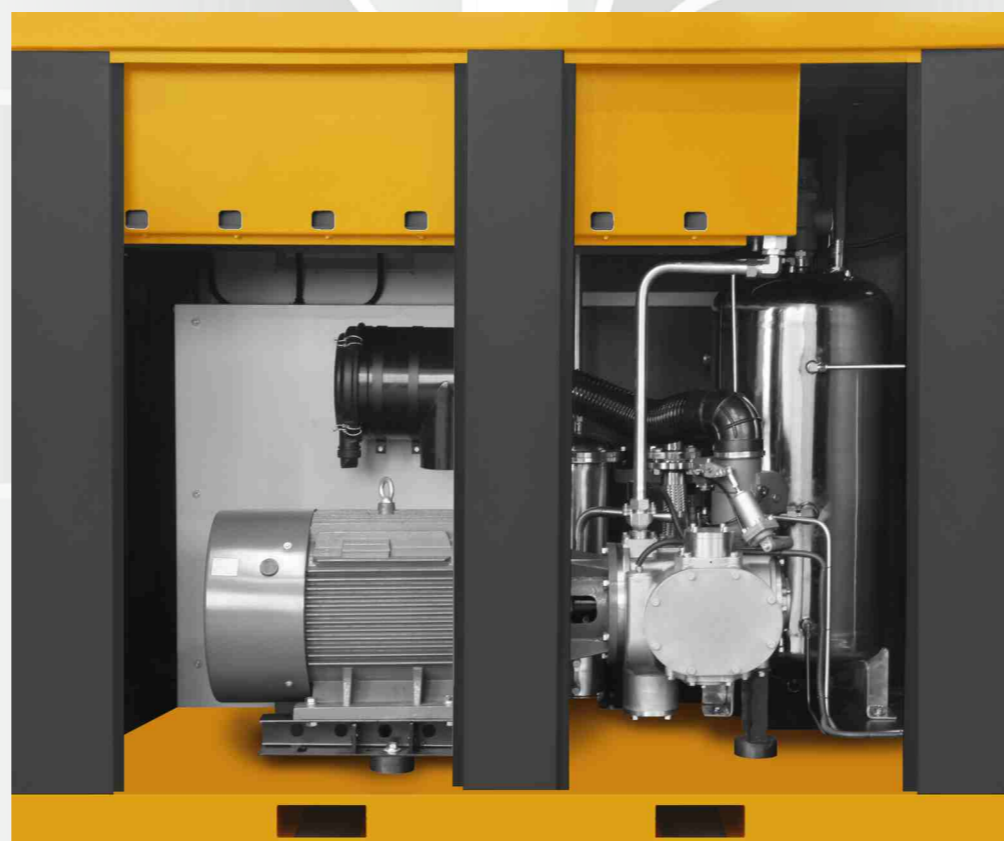


# 水润滑无油螺杆压缩机技术优势

## WATER LUBRICATION OIL-FREE SCREW AIR COMPRESSOR TECHNICAL ADVANTAGE

12  
"12" More  
Advantages

- 采用第五代无油螺杆主机技术，压缩机主机及系统采用不锈钢合金，实现了从铜主机到不锈钢主机的技术超越。  
With the fifth generation technology of oil-free screw air end, the air end is stainless steel alloy, thus the technological transcendence from the copper air end to the stainless air end.
- 整机采用集成设计，没有繁杂的管路和线路，故障点更少，更稳定。  
Integrated design, no complex pipe and electric line. Fewer failure, more stable.
- 更少的维护耗材(空气过滤滤芯、水过滤滤芯)，维护简便，保证更少的维护费用。  
Less maintenance consumables (Air filter, water filter), Easy maintenance, less maintenance costs.
- 压缩机系统绝对无油，没有任何油污风险，是压缩空气无油的保证。  
Absolutely oil free, No risk of oil pollution, Is the guarantee of oilless compressed air.
- 等温压缩，容积效率更高。相比二级干式无油螺杆机平均节能15%以上，相比其一级压缩平均节能25%以上，运行温度小于50°C，没有被灼伤的风险。  
Ambient temperature compression, Higher efficiency, the average energy saving is more than 15% compared with two stage dry oil-free screw machine, 25% saving compared to single stage dry oil-free. The Operation temperature less than 50°C, No risk to burned.
- 全数控智能精密的加工技术以及主机运行受力平衡，保证更低的噪音、更小的震动，同时保障更长的使用寿命。  
CNC intelligent precision machining technology and High balance of air ends operation, Guarantee lower noise, smaller vibration, Longer life.



选择艾玛·选择好品质

CHOOSE AIRHORSE, CHOOSE QUALITY

- 更宽的压力范围：2bar-40bar  
Pressure including: 2bar-40bar
- 相同功率的水润滑螺杆压缩机比干式无油螺杆压缩机排气量平均大10%以上。  
10% air flow higher than dry oil free screw air compressor in same power.
- 操作更加简单方便，采用PLC智能控制，具有自动故障检测、故障预警、保养提醒、自动保护功能，可实现24小时无人值守，可实现远程控制功能。  
Easy operation, PLC controlled, Automatic fault detection, Fault warning, Maintenance reminder, Automatic protection, 24 hours unattended, Remote control achieved.
- 压缩空气经过润滑水的清洗，更加洁净，可以直接用于呼吸使用，饱和压缩空气的露点更低，压缩空气的含水量比普通干式螺杆空压机平均低25%以上。  
Compressed air is cleaned by lubricating water, More clean, Can be used directly for breathing, the dew point more lower, The water content of compressed air is 25% lower than dry screw air compressors.
- 专利主机优化设计，大转子，低转速(3000r/min以内)，没有齿轮箱，采用直连驱动，相比干式无油螺杆(10000r/min-20000r/min)更低转速，更长寿命。  
Air end optimization design, big rotor, low RPM(3000r/min), no gear, direct driven. The RPM is more lower, and life is more longer than dry oilless screw.
- 可实现定期自动换水和自动系统清洗功能，压缩机内部更加整洁、卫生。  
Regular automatic water change and automatic system cleaning, The compressor is cleaner and hygienic.